

# MARBLE UPDATE

MARBLE COLLEGIATE CHURCH 1 WEST 29TH STREET, NEW YORK, NEW YORK 10001-4596 WWW.MARBLECHURCH.ORG 212-686-2770 212-685-0706 FAX

APRIL 2010

## SUNDAY WORSHIP 11AM

Dr. Michael Brown  
preaching

Schedule for Live webcast  
at [www.marblechurch.org](http://www.marblechurch.org)

**10am** – Bible Study with  
Sr. Carol Perry

**11am** – Worship Service

**12:15pm** – Talkback with  
Dr. Brown

**12:45pm** – Replay of  
Bible Study

**1:30pm** – Adult Education

**TV** – Fridays @ 4:30pm,  
MNN Time Warner Ch. 67  
and RCN Ch. 85

**Radio** – Sundays @ 7pm,  
WOR Radio/710-AM

## WEDNESDAY WORSHIP 6:15PM

(Details on pg 6)

## Hope and New Life for All

"Where do we go from here?" I have no idea how many times I asked that, or heard it asked by others, during our recent church trip to the Holy Land. Thank God for capable guides who always had a ready answer to that question.

It is a question often asked in various realms of life. Upon graduation, and facing the hope/need for a job, we ask: "Where do I go from here?" Dealing with the loss of a loved one, and struggling to find what psychologists call "new normal," we ask: "Where do I go from here?" Making sense of a new relationship, a new marriage, a new baby, an empty nest, retirement, and so on, we ask: "Where do I go from here?"

It is a particularly appropriate question for the time following Easter. Where do we go from Easter, that highest and holiest of all the great days of our Faith? Where do we go from an Empty Tomb and a Risen Messiah? The ancient Church designated the time between Resurrection Sunday and Pentecost as *Eastertide*. It was a season for remaining with and living into the meaning of the Great Day.

So what if we decided to live into the meaning of Easter? To embrace the message of ultimate victory over anything that has entombed us to



this point? To focus upon God's power to do things that we alone cannot do? To meditate upon the reality that when things looked their worst, God created the best? To begin to trust that Resurrection is a principle of life, that suffering comes to one and all but it does not have the final word?

If this sounds like the historic Marble message of *Positive Thinking*, well, it is. There is no message more positive than the message of Easter. "The Lord is risen! He is risen, indeed!" And if God can work that miracle for Jesus, God can also work miracles of new hope and victory and joy for us.

Let me encourage you to participate in the life of Marble Church throughout Eastertide. Attend Bible Study, Sunday Worship, Adult Ed, Wednesday Worship, small groups. Explore in community and conversation with others what Easter means – not just the day, but more especially the ongoing principle it represents. Here you will find a consistent reminder that Christ is still alive and present – and that new life and hope is available to us all.

- MARBLE CURRICULUM FOR SPIRITUAL GROWTH
- PROGRAM MINISTRIES
- SPIRITUAL ENRICHMENT
- OPPORTUNITIES TO SERVE
- MARBLE MATTERS

## Sunday Worship, 11am \*DR. MICHAEL B. BROWN PREACHING

**APRIL 4\* (Easter Sunday)**  
**The Road to Emmaus**  
Luke 24:13-35  
(Services at 9 & 11am)

**APRIL 11**  
**So, Now What...?**  
John 20:19-31  
Dr. P. Kimberleigh Jordan,  
preaching

**APRIL 18\***  
**To Do No Harm**  
I John 4:7-11, 19-21

**APRIL 25\***  
**Personal Questions**  
Philippians 2:1-14  
(Earth Day/Creation Sunday)

Marble's Lenten journey culminates in Holy Week when we follow Jesus into Jerusalem, through Maundy Thursday, Good Friday, and to Easter morning.

## Holy Week at Marble

### MARCH 28, PALM / PASSION SUNDAY

**Prayer Circle** – Singing and prayer for individual and communal concerns in Poling Chapel. 8:30am.

**Worship** – “The Road to the Cross” (Luke 19:28-39) is Dr. Michael Brown's message. Members are encouraged to attend the early service to ensure that there are seats in the Sanctuary for visitors during the second service. 9 & 11am.

**Bible & Breakfast** – “The Final Journey” traces the path of Jesus in the final chapters of Luke's gospel. Bible Study led by Sister Carol Perry (\$5, suggested donation). 10:30am.

**End Hunger Now** – Rev. David Lewicki leads a discussion among experts about what faith communities can do to end hunger. Guests include Janet Poppendieck (Hunter College); Hannah Laufer-Rottman (Palms for Life Fund); Joel Berg (NYC Coalition Against Hunger); John Coonrod (The Hunger Project). 1:30pm.

### APRIL 1, MAUNDY THURSDAY

**Tenebrae, Service of Shadows** – This moving service depicts Christ's last hours in dramatic readings, music, and a gradual dimming of lights symbolizing His dark hours on the cross. Directed by Marjorie Martin with Victor Slezak

portraying Jesus; music by the Marble Sanctuary Choir, directed by Kenneth Dake. 7pm

### APRIL 2, GOOD FRIDAY

**Music for Meditation** – Voxare String Quartet, 11:30am.

**Worship** – “Betrayed by a Kiss” (Mark 14:43-50) is Dr. Michael Brown's message. Music Director Kenneth Dake leads the Marble Festival of Voices and Sanctuary Choir in excerpts from Mozart's *Requiem*. 12 Noon

**Prayer Vigil** – Join us in the Sanctuary to pray for members and friends of Marble Church. 1–3pm

### APRIL 4, EASTER SUNDAY

**Sunrise Service** – Rev. David Lewicki, Rev. Steven D. Pierce, and Dr. Kimberleigh Jordan lead worship, with Holy Communion, in Poling Chapel. 7am.

**Celebratory Breakfast** – 8-8:45am. (\$10) Reserve by April 1 with Siobhan Tull (STull@marblechurch.org)

**Worship** – “The Road to Emmaus” (Luke 24:13-35) is Dr. Michael Brown's Easter message at two identical services. Families attend early worship with special activities for children following the service. 9 & 11am. (Prelude for brass and organ, 8:45 & 10:45am.)

## Marble Curriculum for Spiritual Growth



Sr. Carol Perry

### Bible Study with Sister Carol Perry

SUNDAYS AT 10AM

#### TO THE ENDS OF THE EARTH

April 11, 18 & 25

Follow the first Christians as they discover what it means to live this faith that Jesus left with them. The Acts of the Apostles chronicles the story of these Christian pioneers as they wrestle with structure and decision-making on the roads of the Roman Empire.

TUESDAYS AT 6:30PM

#### THE PUBLIC LIFE OF JESUS

April 6, 13, 20 & 27

This class looks at key events in the public life of Jesus as recorded in the Gospel of John. Sr. Carol Perry then makes a comparison study of the Passion and Death of Jesus described in all four gospels. An in-depth investigation of these biblical texts can increase awareness of God's Spirit as we move forward in our personal growth.

#### STAFF FOR THIS ISSUE:

EDITOR:  
Don Piper

PHOTOS:  
Dave Cross

GRAPHIC DESIGN:  
Beth Player-DiCicco

WEEKDAYS, NOON–1PM

#### SPIRITUALITY IN THE WORKPLACE

##### Boost Your Spirit over Lunch

Feeling weary in the middle of your workday? Bring your lunch and join a practical, interactive Bible study in three Manhattan locations with Sr. Carol Perry, Marble's resident Bible scholar. Return to work energized.

TUESDAYS

**April 6 & 20:** Marble Collegiate Church, 3 West 29th Street (check lobby schedule for room).

**April 13 & 27:** Downtown at 2 Wall Street, Law Offices of Carter, Ledyard & Milburn, 18th floor.

THURSDAY

**April 8 & 22:** St. Bartholomew's Church, 325 Park Avenue (at 51st Street). Enter through Park Avenue doors and proceed to the Welcome Center, directly behind the chancel to the right.

## Adult Education in Bay Hall

### LIVING INTO EASTER

The season of Easter – all 50 days of it – has its own theological and psychological puzzles, challenges and invitations. Each year it moves us from the loss and despair of Good Friday to a place of surprise and resurrection. This month, Adult Education goes deeper into those places of new life: how to experience Easter year-round, and how to both live into and understand what we mean by resurrection.

SUNDAYS AT 1:30PM

### CHARTING YOUR COURSE IN EASTER

April 11

Nina H. Frost

The Easter season is an invitation to live a fully vibrant life year-round. What does it mean to engage some of the classic Easter conversions? Nina Frost, Director of Adult Education, explores the surprising, ongoing ways the biblical stories surrounding Easter are also road maps to your own spiritual growth and renewal. Come chart your journey in some new, exciting and healing ways.

### RISE AGAIN: TURN ADVERSITY INTO OPPORTUNITY

April 18

Brian Robinson

Financial uncertainty, the loss of someone we love, an unfulfilled dream – these are hardships few of us escape. How we deal with difficult periods in life is a lesson worth learning. Brian Robinson and guest panelists, including a cancer survivor and someone incarcerated for twenty years, talk about ways in which we can deepen our faith and enlighten our spiritual awareness through tough times and emerge wiser and more connected to the One who gives us strength.



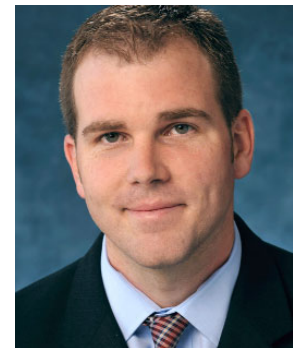
Brian Robinson

### LIVING THE RESURRECTION

April 25

Rev. Steven D. Pierce

For centuries, Christians have held to an astonishing belief that Jesus rose from the dead after being executed on a Roman cross two thousand years ago. All the gospel stories agree that something had happened, focusing on the many witnesses of the empty tomb and of Jesus' resurrection appearances. What does all of this mean? How does this belief shape the way we live in the 21st century? Join Rev. Pierce as he unpacks the significance of Jesus' resurrection in a multimedia presentation.



Rev. Steven Pierce

## Program Ministries

### Children, Youth & Families Ministry (CYF)

#### EASTER SUNDAY, APRIL 4

Join our regularly-scheduled Sunday School classes (between 9 and 11am worship) where we celebrate Jesus' Resurrection. Special Easter activities and snacks are included. Children's Choir rehearsals are also held at regular times; the children rejoice through music that Jesus is risen!



#### PARENT'S GROUP

Sundays, April 11, 18, & 25, 10am

Wendy Mogel's book, *The Blessing of a Skinned Knee*, is our theme for discussion led by Dr. Kimberleigh Jordan this spring. While children attend Sunday School or childcare, adults meet over coffee/tea to discuss their shared journey as parents and explore the spiritual lives of children. All parents/guardians are welcome; no pre-registration is necessary. Meets on the 6th floor. Pre-reading of the book is encouraged but not required.

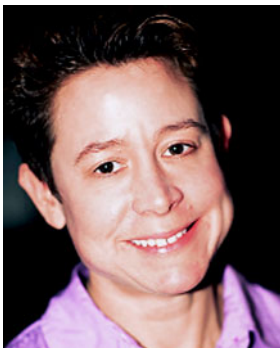
### Committed Couples

#### ROADS TO PRAYER

Saturday, April 10, 9:30am–2:30pm

Day Retreat at Marble

Need to revitalize your prayer life? Lift your spirit? Recognizing and honoring your own unique spiritual needs – as well as your partner's – is part of a healthy relationship. The Spiritual Enrichment Committee and Committed Couples Ministry co-sponsor a day retreat at Marble that can help you and the one you love grow more spiritually and prayerfully as individuals. Details on page 6.



Rev. Karen H. Senecal

## Entrepreneurs

### LONELY AT THE TOP

Thursday, April 15, 6:30-8:30pm

*"To be" is to be singular, unique, and consequently lonely. – Joseph Soloveichik*

Our leadership theme continues this month as we explore the loneliness often experienced by leaders. A panel of experts, including **Rev. Karen H. Senecal** (former minister of NYC Judson Memorial Church and now a practicing psychoanalyst), **Rev. John Anderson** (coordinator of bereavement services at Pax Christi Hospice, Catholic priest, and licensed Kundalini yoga instructor), and **Rev. Peter D. Surgenor** (executive director of Holmes Presbyterian Camp and Conference Center), share personal stories of leadership and their own loneliness. The evening concludes with a conversation about ways to be with loneliness and create connections that bridge the gap. Suggested contribution, \$10.



Rev. John Anderson

## GIFTS: An LGBT Fellowship

### TRUE COLORS

Thursday, April 29, 7:30pm

Concert à la Carte

All are invited to the final *Concert à la Carte* of the season. The Music Ministry teams up with the GIFTS Fellowship to present a rich and entertaining evening of compositions by LGBT composers. Spanning over 200 years of music, this eclectic offering of vocal and piano works highlights pieces both from the classical and musical theater canons, including the premiere of a song cycle by David Sisco. Hosted by Kenneth Dake and David Sisco, the concert features outstanding soloists from the Sanctuary Choir along with special guest artist Christopher Herbert, baritone. Open to all.

### TIME

6pm, Dinner

7:30pm, Concert

### COST

**\$25, Dinner & Concert (registration required)\***  
**\$15, Concert only; tickets at the door (\$10, students 8-18). Childcare available for children 7 years and under.**

\*Reservations required for dinner; register Sundays in Bay Hall after worship, contact Elise Hanley (ext. 470) at the church (EHanley@marblechurch.org), or register online at [www.marblechurch.org](http://www.marblechurch.org).



Diane Johnston

## Marble Connection

YOUNG ADULTS IN THEIR 20s & 30s

### UPPER ROOM DINNER

Good Friday, April 2, 6:15pm

We gather at Marble Church for our own Upper Room dinner. The feast is Middle Eastern fare and it's potluck, so contact Rev. David Lewicki (DLewicki@marblechurch.org) to find out what to bring. Over dinner, we reflect on the experience of Holy Week, read poetry, and listen to music. Afterwards, we talk until the candles burn low.

### SUNDAY CONVERSATIONS, 12:30-1:30PM

April 11 – "Reading the Bible on the A Train."

Our monthly gathering focuses on practical, smart strategies for reading the Bible for personal growth. If you aren't reading the Bible, you are missing God – but the Bible is also a complicated book to read and understand. Rev. Lewicki helps you get on friendlier terms with the Book of Books.

April 18 & 25 – Enjoy coffee and fellowship at the Connection Table in Bay Hall immediately following morning worship.

### YOUNG ADULT BIBLE STUDY

Wednesdays, beginning April 7, 7:15pm

Every Wednesday night this spring, young adults gather after Wednesday Worship for Bible study in Peale Parlor to discuss Luke's gospel.

## 40s & 50s Ministry

### RECAPTURING JOY:

### LISTENING TO OUR LONELINESS

Thursday, April 22, 6-8:30pm

Nina H. Frost & Diane Johnston

Our "prime of life" years bring with them joys but also challenges, often including a sense of surprise at how things have turned out so far. That surprise can usher in loneliness, even depression, as we grapple with where we are in our lives. Could depression and loneliness have a purpose, especially in our 40s and 50s? How can we deal with these emotional states in ways that face them squarely? How can we recapture joy by working to transform them? Come for an honest, illuminating discussion led by Nina Frost, Director of Adult Education, and Diane Johnston, N.P., M.S., a psychotherapist with a specialty in the area of stress reduction and mind/body medicine.

Dinner program; see column page 5. Register online at [www.marblechurch.org](http://www.marblechurch.org) or contact Siobhan Tull (ext. 412) at the church (STull@marblechurch.org).

## DEMONS AND DEVOTIONS: THE HOURS OF SAINT CATHERINE OF CLEVES

Friday, April 9, 7pm

Morgan Library & Museum

St. Catherine of Cleves' miniature illuminated prayer book is considered the greatest masterpiece of medieval Dutch Art. Join us at the Morgan Library & Museum (225 Madison Ave. between 36th & 37th Sts) to view the exhibit and afterward enjoy dinner at the Gemini Diner. No cost for this event; the museum is free to the public and dinner is optional/pay on your own. RSVP by Wednesday, April 7, to Siobhan Tull (ext. 412) at the church (STull@marblechurch.org).

## Men's Ministry

### NAVIGATING THROUGH DIFFICULT TIMES

Weekend Retreat, Friday-Sunday, April 16-18

Rev. Doug Wysockey-Johnson

Every life journey has wilderness periods when it is dark, solutions are few, and we feel alone on the path. Yet even in difficult times God has particular ways of guiding us. With retreat leader Rev. Doug Wysockey-Johnson, we look at how to move with courage, dignity, and common sense through adversity, ultimately seeing it as a gift from God for personal growth. The weekend includes discussion, Bible study, free time for walks along the Hudson River, and fun – all in the relaxed atmosphere of St. Joseph's Villa in Saugerties, NY, located on 64 acres of quiet, wooded countryside.

Doug Wysockey-Johnson is Executive Director of Lumunos (formerly Faith@Work), a national organization to help people find greater spiritual meaning in their professional lives.

Cost, \$175 (includes meals and lodging); registration required. Reserve with Tom Schneider (ext. 712) at the church (TSchneider@marblechurch.org) or online at [www.marblechurch.org](http://www.marblechurch.org).

### BRUNCH & DISCUSSION

Sunday, April 25, 12:30pm

Following worship, we gather for brunch in Burrell Hall. If you wish to be seated with other men of the church, please look for our Men's Ministry volunteers to guide you to reserved tables. At 1:30pm, we attend Adult Education in Bay Hall to discuss "Living the Resurrection" with Rev. Steven Pierce. All men are welcome. Brunch, \$12 (no reservation needed). For inquiries, contact Rev. Pierce or Tom Schneider at the church.

## 60+ Fellowship

### LUNCH AND PROGRAM

12pm, Lunch

Served promptly at noon. Regular meal (salad, soup & dessert), \$7. Special occasion meal: \$10, Fellowship members; \$12, guests.

1pm, Program

April 7 – Chef Ron outdoes himself with an Easter feast (\$10 members; \$12 guests) followed by talented students from Manhattan School of Music who present a classical recital.

April 14 – Sylla Haskell introduces "Mayfair Lady," a multi-media exploration of George Bernard Shaw with musical interludes from *My Fair Lady*.

April 21 – Marble Staff and Tricia Woods entertain with a Spring Music Revue.

April 28 – Drew Kindred energizes us with chair yoga and group dances.

### CLASSES, CLUBS & MOVIES

Classes and activities listed below are free, but registered membership in the 60+ Fellowship is required. Contact Colleen Cosgrove (212-686-2770) to join.

**Exercise Class, 10-10:45am** – Fitness and fun is led by peer instructors certified by NYC's Dept. of the Aging. No pre-registration needed. Ellie Minor teaches line dancing, April 21.

**Bridge Club, 2:15pm** – Experienced players welcome. On April 14, bridge master Mike Galatola teaches a class for intermediate players and above. \$2, requested donation for Mr. Galatola's instruction.

**Movie of the Week, 2:15pm (Room 601)** – Serendipity, happenstance, chance meetings, heavenly mishaps, and telepathic dreams – it's April movie madness:

4/7 – "Akeelah and the Bee" (2006); Keke Parker, Angela Bassett and Laurence Fishburne.

4/14 – "Queen Bee" (1955); Joan Crawford and Barry Sullivan.

4/21 – "The Secret Life of Bees" (2008); Dakota Fanning and Jennifer Hudson.

4/28 – "Ulee's Gold" (1997); Peter Fonda, Tom Wood and Christine Dunford.

### BALLROOM DANCING

April 7 & 21; 2:15pm

Fellowship member and ballroom dancer Judith Nocella leads a fun, uplifting session. Brush up your skills and learn new steps. Open to all; pre-register with Colleen Cosgrove. Appropriate footwear recommended.

### DINNER PROGRAMS AT MARBLE

TIME: 6pm, dinner\*  
7pm, program

COST: \$18, dinner & program  
\$8, program only

\*24-hour advance registration required for dinner programs.

Reserve in Bay Hall after

Sunday worship, online at

[www.marblechurch.org](http://www.marblechurch.org), or call the church, 212-686-2770.



Rev. Doug Wysockey-Johnson

**KNITTING AND CROCHETING***Fridays, 11am-12:30pm*

Mary Duffy helps you learn to knit or to perfect your skills. All levels welcome. Please supply your own materials. Pre-registration required with Colleen Cosgrove.

**AARP TAX AID***Wednesdays, April 7 & 14**9:30am-2pm, Room 205*

Volunteers from the AARP Tax Aid Program help complete your IRS tax forms. This free service, for adults 50 years and older, continues Wednesdays, April 7 and 14. First come, first served.

**SAVE THE DATE**

**Wednesdays in May** – Judy Tulin teaches her popular class for the artist in each of us, “Painting the Beauty of Spring.” Register in advance with Colleen Cosgrove.

**Marble Women’s Ministry****RETREAT 2010 REUNION BRUNCH***Sunday, April 11, 12:30pm*

Immediately following worship, Marble Women gather for brunch to reconnect following our Annual Retreat. Come for good food and sisterly conversation in the Meeting Place. All are welcome, whether or not you attended the retreat. Why not bring a friend and introduce her to the friendly, caring community of women at Marble Church? Childcare provided.

Pre-register online at [www.marblechurch.org](http://www.marblechurch.org) or Sunday mornings after worship at the Women’s Ministry table in Bay Hall. For information, contact Elise Hanley at the church (EHanley@marblechurch.org.) Brunch, \$12.

**Spiritual Enrichment and Support****Wednesday Worship @ 6:15pm**

This mid-week service blends traditional and contemporary worship styles, taking the best of both, creating a mixture that is informal and reverent, often humorous and always Spirit-filled. Topics this month include:

**April 7\*** – “Close Enough to Kiss” (John 20:19-23); an Easter celebration with the WeWo praise team. Rev. Lewicki preaches. Holy Communion is celebrated.

**April 14** – “Truly Converted” (Acts 9:1-20); a conversation about how God changes our lives, whether we are blinded...or not. Djoré Nance leads music. Rev. Lewicki preaches.

**April 21** – “Sheepish” (Psalm 23, John 10:22-30); sheep play a large role in Biblical texts. What can we learn from sheep about being disciples? Are sheep smart or stupid? Loyal or recalcitrant? Djoré Nance and Cassandra Kellam lead music. Rev. Lewicki preaches.

**April 28** – “Don’t Mess with the Holy Spirit” (Acts 11:1-18); God reveals a plan for the world that is more inclusive than anyone realizes. Since the beginning, the Holy Spirit has overthrown our biases, preconditions, and imitations on God’s grace. Music by the Marble Community Gospel Choir. Rev. Lewicki preaches.

**May 5\*** – “I Doubt It” (John 20:24-31) with author Jason Boyett, guest preacher. Jason Boyett is a Texas author whose brash

*Pocket Guides* to Christianity remind us that faithfulness can be fun and funny. His new book, *O Me of Little Faith*, explores the role of doubt in a life of faith. Boyett co-preaches with Rev. Lewicki and leads an informal conversation after worship. Music by the WeWo praise team.

\**The Labyrinth* is available, 5–8pm, in Burrell Hall for walking meditation the first Wednesday of every month. Instructions are provided for those new to the experience.

**Day Retreat at Marble****ROADS TO PRAYER***Saturday, April 10, 9:30am-2:30pm*

Need to revitalize your prayer life? Nourish your soul? Reconnect with God’s Spirit? The Spiritual Enrichment Ministry and Committed Couples Ministry co-sponsor a restorative, nourishing, fun, and restful retreat at Marble. The day includes guided meditation with Sr. Carol Perry, journaling with Nina Frost, and walking the labyrinth with Jean Ando. A closing meditation service and Holy Communion is led by Rev. David Lewicki and Liz Testa. After the dreariness of winter, it’s just what you need to lift your spirit and welcome spring.

Cost, \$20 (\$15, Students/Seniors); includes light refreshments. Pre-registration required; contact Judy Tulin (ext. 709) at the church (JTulin@marblechurch.org).



Jason Boyett

## Spiritual Enrichment Ministry Team

A dedicated group of lay persons, led by Rev. Steve Pierce, offers you spiritual support and encouragement in a number of ways:

**Prayer Requests:** Cards are available in the Sanctuary pew racks for you to record your request, which is held in prayer by the Spiritual Enrichment Team for two weeks.

**Prayer Circle:** Sundays at 10am, worship, singing, and prayer for individual and communal concerns take place in Poling Chapel. Holy Communion is celebrated the first Sunday of the month.

**Prayer Room:** Sundays after worship, an intimate space is open for quiet reflection and prayer. Located in the hallway between the Sanctuary and Bay Hall.

**Labyrinth:** This powerful tool for meditation is available in Burrell Hall for contemplative walking the first Wednesday evening of each month and every Wednesday during Lent, 5–9pm. Instructions are provided for those new to the experience

## Compassionate Friends

April 13, 7:30–9pm

Whether your family has had a child die at any age, from any cause, or you are trying to help those who have gone through this life-altering experience, this support group exists to provide friendship, understanding, and hope to those going through the grieving process. Meets the second Tuesday of each month at Marble Church. For inquiries, call the Compassionate Friends information line, (212) 217-9647.

## Opportunities to Serve

### Action Volunteers

#### WAYS TO HELP OTHERS

*Everyone can be great because everyone can serve... -- Dr. Martin Luther King, Jr.*

There are many ways to share your abilities with others this spring:

**Sundays, through April 25** – Join the Drive for Dignity by collecting new undergarments for homeless adults. This year, your gifts will be shared with MainChance, Icahn House and Neighborhood Coalition for Shelter. Recipients last year were extremely grateful for our efforts, as few individuals or organizations think to give these basic items of clothing. Bring your donations to the Action Table on the Portico.

**Sunday, April 4** – Contribute food to HONEY (Help Our Neighbors Eat Year-round) by bringing non-perishables to the Action Table on the Portico.

**Sunday, April 4** – Serve lunch to disadvantaged (and, in some cases, homeless) seniors after worship at a local church on East 31st Street.

**Sunday, April 11** – Volunteers needed to help prepare 50 lunches, 9:30-10:30am, for our Ecclesia Ministry (an open-air worshipping congregation for the homeless in Madison Square Park). Others needed to transport the lunches and host the service, starting at 1:30pm.

**Saturday, April 24** – Common Ground is looking for volunteers to serve lunch, 12 Noon-3:00pm, to guests at The Prince George (28th Street between Fifth & Madison).

**Saturday, April 24** – Paint, rake, plant and more during “Hands on New York Day” sponsored by New York Cares. Join Marble’s team as we spruce up one of NYC’s many parks and community gardens.

**Sunday, April 25** – The Action Committee sorts used clothing for the homeless. Volunteers are needed to help with the sort and, most importantly, drivers with cars are needed to deliver the garments to the shelters.

#### SAVE THE DATE

**Saturday, May 15** – Marble volunteers assist with the Manhattan Special Olympics Spring Track and Field games. Coaches, trainers, chaperones and huggers are needed. Help make the day a true celebration.

#### INTERESTED IN SERVING ON A REGULAR BASIS? CONSIDER...

**Recording for the Blind & Dyslexic** is an educational library serving people who cannot read standard print. They are looking for volunteers to be **readers** – reading aloud the text of books; **bookmarkers** – people who make notes to guide readers; and general office assistance.

*Stop at the Action Table on the Portico after worship any Sunday to talk with a committee member about these opportunities and others, or call Gail Kitselman, Director of Volunteer Ministries, at the church. Experience the joy of sharing your talents with others.*



NY Cares Day volunteers



## Share the Marble Spirit!

### Bring-A-Friend Sunday, April 18

Last December's "Bring-A-Friend Sunday" was such a great success, with so many of our friends and loved ones enjoying the Marble experience, that "Bring-A-Friend Sunday" has become a regularly-scheduled event.

We often ask friends to share a dinner or movie. Why not ask them to share a Marble worship service and brunch? It may take a bit of courage, but imagine the reward of seeing your friends moved by God's love and Marble's music, message, and warm welcome. Perhaps you first came to Marble Church through the invitation of a friend. Why not return the favor and introduce someone you care about to the unique, faith-

filled spirit of Marble?

Our clergy, staff, and a host of church members will be on hand to make everyone feel wanted, welcomed, and loved. The day is designed to care for our guests: we will introduce many of the church's programs and offerings, and will handle inquiries your friends may have. Rest assured that they will receive extra special attention and a full dose of Marble's hallmark hospitality.

Is there someone you know who would find inspiration from our worship service and warm, embracing community? **Pray** for them, **care** for them, and **share** your church family with them on April 18. After all, isn't that what friends do for each other?

FIRST-CLASS MAIL  
U.S. POSTAGE PAID  
MAILED FROM  
ZIP CODE 10001  
PERMIT NO. 269

ADDRESS SERVICE REQUESTED  
Marble Collegiate Church  
One West Twenty-Ninth Street, NY, NY 10001-4596

APR 2010

MARBLE UPDATE

## Music at Marble

### TRUE COLORS

Thursday, April 29, 7:30pm

Concert à la Carte

Don't miss the final *Concert à la Carte* of the season. The Music Ministry teams up with the GIFTS Fellowship to present a rich and entertaining evening of compositions by LGBT composers. Open to all. Details on page 4.

### THE LAST WORD...

Life isn't about finding yourself.  
Life is about creating yourself.

— GEORGE BERNARD SHAW

## Honoring Someone Special

When someone dies and you wish to express sympathy to the family, rather than sending flowers, consider making a gift to your church. Marble Church will inform the family of your remembrance with an appropriate card and send you, the donor, an acknowledgement.

Or you might like to honor an important person in your life – it could be for a birthday, an anniversary, or no occasion at all. We will notify the person you are honoring of your thoughtfulness. Please use the brochure for Tribute Giving found in the Sanctuary pews and literature racks in the 3 West 29th Street lobby, or call the church to have one sent to you.