

MARBLEUPDATE

MARBLE COLLEGIATE CHURCH 1 WEST 29TH STREET, NEW YORK, NEW YORK 10001-4596 WWW.MARBLECHURCH.ORG 212-686-2770 212-685-0706 FAX

JANUARY 2011

SUNDAY WORSHIP 11AM

DR. MICHAEL BROWN
PREACHING

Schedule for Live Webcast
at www.marblechurch.org

10am – Bible Study with
Sr. Carol Perry

11am – Worship Service

12:15pm – Talkback with
Dr. Brown

12:45pm – Replay of
Bible Study

1:30pm – Adult Education

TV – Fridays @ 4:30pm,
MNN Time Warner Ch. 67
and RCN Ch. 85

Radio – Sundays @ 7pm,
WOR Radio/710-AM

WEDNESDAY WORSHIP 6:15PM

Behold, I Make All Things New

"Behold, I make all things new." Those are the words attributed to God by John, the author of *Revelation*. As often as that text is quoted at the first of every year, the truth is that "new" does not necessarily mean "welcome." There's something comfortable about the familiar.

I was in Macy's this week. They had a sale going, and I needed a pair of shoes. I found some Bostonians, a nice shade of brown, soft, comfortable, and best of all, cheap. Really cheap. So, I bought them. I wore them at a church event last night and received a compliment. I love my new shoes.

Anyway, today I said to myself (and I am not exaggerating): "If I take really good care of them, I can get years of wear out of those shoes. Re-sole them once in a while, and I may be able to wear them till I retire." What kind of a person buys a pair of shoes and thinks of how many years he can wear them? I guess that kind of person would be me. I find old shoes to be comfortable. They fit my feet. They feel familiar.

Sometimes we are like that about more serious things like personal habits, or church, or life. I said to someone recently: "A new year always brings new friends." He answered quickly (and seriously): "I'm not interested in new friends. I'm happy with my old ones." An acquaintance of mine still complains that the Roman Catholic Church no longer does the Mass in Latin. He speaks no Latin whatsoever. Who does? But, he has never made peace with that change in custom. Another friend refuses to eat seafood that is not fried. The truly weird thing is that he has never tasted



baked, grilled, or broiled seafood. Never. Not even once. Waistline and cholesterol notwithstanding, he was turned onto breaded, fried flounder, perch, oysters, and shrimp as a child, and he has never seen a reason to try something new.

So, what about us? What personal habits or spiritual practices may we have outgrown? What lifestyle choices feel comfortable but are not good for body or soul? What about the tendency to criticize, gossip, resent, or bear grudges? What about old prejudices, fears, or guilt? What about the way we respond (or fail to respond) to new people in our paths?

Sometimes we grow comfortable with things as they are and shut the door on things as they can yet be.

I read a line by an editorialist that said: "Every year at Christmas, I make a vow to become active in church. And I always wonder come the next Christmas why I didn't live up to that vow for the past twelve months." Maybe this is the time to make some new vows ... and some new commitments to live up to them. I think "activity in church" should be near the top of the list. Add others, as the Divine Whisper nudges you to: exercise, diet, family time, learning to forgive, deciding to give, developing a positive attitude ... make up your own list. God has promised to give us newness of life and perspective, but God will not do that against our will. It's up to us to determine what from the past to hold onto, and what in the future to reach out for. Even when I wear my old shoes, God may want my feet to walk a new path. "Behold, I make all things new."

Happy New Year!

- MARBLE CURRICULUM FOR SPIRITUAL GROWTH
- PROGRAM MINISTRIES
- SPIRITUAL ENRICHMENT
- OPPORTUNITIES TO SERVE
- MARBLE MATTERS

Too Normal to Be a Christian: An Eight-part Walk through Christ's Sermon on the Mount

DR. MICHAEL B. BROWN PREACHING

JANUARY 2

Too Normal to Be a Christian, Part I
Matthew 5:1; 7:24-29

JANUARY 9

Part II: Not the Normal Kind of Happiness
Matthew 5:1-12

JANUARY 16

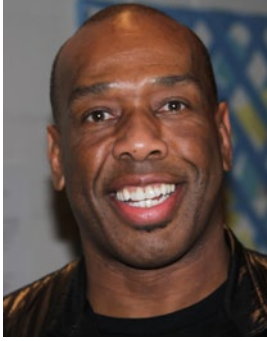
Part III: The "You Are" Statements
Matthew 5:13-16

JANUARY 23

Part IV: Perceiving Badness, Projecting Goodness
Matthew 5:38-42

JANUARY 30

Part V: The Difference Between Religion and Discipleship
Matthew 6:1-16



Terry Washington

Why Does Membership Matter?

Terry Washington

One of my late grandmother's favorite quotes comes from the Chinese philosopher Lao Tzu. "A journey of a thousand miles begins with just a single step." My journey began on a beautiful Sunday morning, May 5, 2002. I came to Marble that morning in search of a loving and affirming community of faith. Much to my surprise I found my church home. The beautiful voices of the Sanctuary Choir, the hymns and the pipe organ, took me back on a journey to Bethany Baptist Church where I had become a member at the age of ten. That's when I decided to follow Christ. And I haven't looked back since – except to praise God for the road that has been traveled. Marble had all the elements that I had longed for and missed.

As I sit and write this article I can't help but cry. God has been so good to me. Membership at Marble has been, and still is, unlike any church I've ever been affiliated with. The opportunities for spiritual growth are many: Sunday Worship, Small Groups, GIFTS, the Gospel Choir, Hospitality, Bible Study with Sister Carol Perry, and the Wednesday evening WeWo Service.

Through my eight year journey as a member at Marble, life has had many challenges for me. I lost my beloved mother, Mrs. Phyllis I. Washington. Then two months after my mother passed, my mother's dearest cousin died from pancreatic cancer. Prior to this, I had a battle with lymphoma and was hospitalized in ICU. The doctors informed my family that I might not pull through. After twenty-four hours, I had pulled through. That afternoon I awoke to see the faces of Shelia Moses and Joe Clift, followed by countless other Marble friends. During the following winter of 2009 and 2010, I went through three biopsies, three hospitalizations, and chemotherapy. The

unending support and prayers of the Ministerial staff and my Marble family helped me through a very difficult period. Through this process I learned how to receive love and accept help when in need. Previously, I was always willing to give, but not willing to receive, nor ask for help.

Opportunities for growth also came through being actively involved in the life of the church. I've had so many wonderful experiences here at Marble: the opportunity to travel to South Africa with the Gospel Choir; to be the first member of GIFTS to share my spiritual experience at Marble from the pulpit; and the important tradition of serving at the Water Table on Pride Day. Who would have thought? God is so good. Just amazing!

"A journey of a thousand miles begins with just a single step." Come on the journey. It only takes a step. Allow God to work in your life. If you see me around Marble please don't hesitate to make yourself known to me, and especially to the ushers and greeters, the hospitality team and the Ministerial staff. In God's name we welcome you.

I'd also like to add a special thank you to Rev. Gregory Johnson for bringing me to Marble. God bless.

Become A Marble Member

WINTER NEW MEMBER CLASS

Sunday, February 6 | 10:00am – 2:45pm

If you've been thinking about membership – take that step. Please stop by after Sunday worship and speak to someone wearing a red carnation, or contact Kim Sebastian Ryan for more details, 212-686-2770, ext. 475, or KRyan@marblechurch.org. Become part of the Marble community – start your journey today.

Marble Curriculum for Spiritual Growth



Sr. Carol Perry

Bible Study with Sister Carol Perry

SUNDAYS AT 10AM

HOW DID JESUS' WORLD LOOK?

January 2, 9, 16, 23 & 30

The life and message of Jesus was shaped by the world in which he was born and worked. What roles did politics, religious divisions and economics play in the fashioning of his message?

TUESDAYS AT 6:30PM

THE ONE-SIDED CONVERSATION

January 4, 11, 18 & 25

We forget that the Apostle Paul's letters are just one side of an ongoing conversation with early church communities. We continue working together to see what lies behind the letters to Ephesus, Colossae, and Rome. Join Sister Carol Perry for an intriguing look at first-century society and culture.

WEEKDAYS, NOON–1PM

Spirituality in the Workplace

BOOST YOUR SPIRIT OVER LUNCH

Bring your lunch and join interactive Bible study in three Manhattan locations with Sr. Carol Perry. Return to work with a new attitude.

TUESDAYS

January 4 & 18: Downtown at 2 Wall Street, Law Offices of Carter, Ledyard & Milburn, 18th fl.

January 11 & 25: Marble Collegiate Church, 3 West 29th Street (check lobby sign for room).

THURSDAYS

January 13 & 27: St. Bartholomew's Church, 325 Park Avenue (at 51st Street). Enter through Park Avenue doors and proceed to the Vestry Room, directly behind the chancel to the right.

Marble Curriculum for Spiritual Growth

BEYOND THE HORIZON – DEEPENING YOUR SPIRITUAL JOURNEY IN 2011

It's the beginning of a new year. What better time to explore uncharted territory in our individual and collective spiritual journeys? Every day, the God who ordered the chaotic cosmos invites us to take the next step towards the destination of ultimate harmony in our own spiritual lives.

This month, we will approach spiritual growth from several different perspectives. We begin by renewing our commitment to open our hearts and minds to try new spiritual tools for this year's journey. The next stop is a music history lesson about the struggle for justice during the Civil Rights era, taught through spoken word and song. Then, we will incline our ear to hear stories of great faith, courage and strength, as we are inspired and enlightened by a panel of persons living with HIV/AIDS who are also crusaders for this life-changing cause. We end the month with an open invitation to everyone to come to our *Small Group Winter Showcase*. From personal to community narratives, from tests to testimonies, and from bondage to freedom, the January curriculum for Spiritual Growth has something for everyone. Journey with us, and expand your spiritual horizons like never before.

SUNDAYS AT 1:30PM

YOUR CALL TO RENEWAL

January 9

Nina H. Frost

What does it mean, in terms of both our Christian faith, and our individual lives, to behold a Lord who in all ways and at all times is making all things new? How do we live into the inherent challenges and opportunities of life's changes? This class will celebrate our collective call to renewal that goes beyond New Year resolutions by focusing on key aspects of our faith, our psychology and Jesus' teachings.

DISCOVERING TRUTH BENEATH THE NOTES GET ON THE BUS: MUSIC OF THE FREEDOM RIDERS

January 16

This lecture is part of today's gospel concert. Those not attending the concert are invited to view the lecture via live streaming in Poling Chapel. See page 8 for information.

FROM VICTIM TO VICTORY: HEALING AND HOPE WHILE LIVING WITH HIV/AIDS

January 23

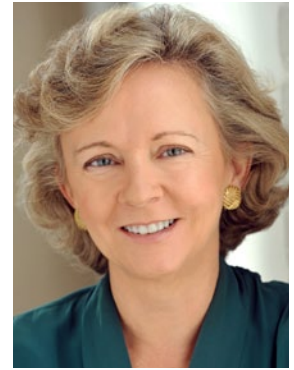
Eric Sawyer

Marble Church is united with the rest of the world in the nearly 30 year fight against HIV/AIDS. With two million deaths per year and 2.7 million new infections, this disease continues to leave physical devastation in its wake. More than 33 million people worldwide are living with HIV/AIDS, and their inspiring stories rise up out of the painful ashes. Today, survivors will share their personal stories, and we will exchange ideas and information on coping and advocacy during a panel discussion featuring UNAIDS Advisor and ACT UP NY co-founder, Eric Sawyer.

SMALL GROUPS WINTER SHOWCASE: SPEED DATING FOR SPIRITUAL GROWTH

January 30

Have you ever wondered what it would be like to join a Small Group but were afraid to take the plunge? Well, here's your chance to find out without the commitment. Welcome to Small Groups Speed Dating. At this lively, interactive event, participants will rotate around the room and sample over a dozen Small Group offerings, shared by experienced leaders whose lives have been changed by their participation in Small Groups. At the end of the Showcase, you can decide what Small Group is right for you – jump start your 2011 spiritual journey in a way that meets you exactly where you are. (See page 7 for more about Marble's Small Group Ministry).



Nina H. Frost



Eric Sawyer

PRAYER CIRCLE EACH SUNDAY Poling Chapel, 10am

This informal get-together, led by ministers, centers on singing and prayer for individual and communal concerns. Holy Communion is celebrated January 9.



Children, Youth & Families Ministry (CYF)

PARENTS' GROUP

Sundays, January 9, 16, 23 & 30 | 10:00am

Parents and guardians are invited to join our Parents' Group while children are in Sunday School. From book discussions, scripture readings, and hands-on experience, parents and guardians are equipped with the spiritual tools to raise their children with Christian values in a secular world. Led by Marble ministers and staff.

CYF OPEN HOUSE

Sunday, January 23 | 9:45am-12:15pm

Bring a friend to Sunday School and/or invite a family to come see what CYF at Marble is all about. Tour classrooms, meet teachers, make friends, and receive information about all the exciting events and opportunities here for Children, Youth, and Families at Marble. It all starts at 9:45am on the 2nd and 6th Floors, ending with a Parents' Meeting, 12:30-2:30pm.

CONFIRMATION CLASS

Sundays, January 30 – May 15 | 12:30-1:30pm

In the Reformed Church in America tradition, it is common for infants and young children to be baptized into the faith. Confirmation is the process of a young person affirming the vows made at baptism at an age when he or she has reached the maturity to do so. It is a significant milestone in their spiritual journey. All youth, Grades 8-12, are eligible to be confirmed. Classes begin Sunday, January 30, and end on Sunday, May 15, when the youth are welcomed as members of the church. If your young adult is interested in being in this year's Confirmation Class please contact CYF Director, Brian Hampton (ext. 442 or BHampton@marblechurch.org).

Committed Couples

REAFFIRMATION OF VOWS

Sunday, January 9 | 12:30pm

Rev. Steven Pierce & Liz Testa

Whether you've shared your lives together for a few months or several years, commit to each other at a reaffirmation ceremony in the Sanctuary led by Rev. Steven Pierce and Liz Testa. Afterwards, enjoy a special brunch by Chef Ron at \$28 per couple. Reservations required; contact Siobhan Tull (ext. 412 or STull@marblechurch.org), or register online at www.marblechurch.org. Childcare available.

SAVE THE DATE

Thursday, February 10 – St. Valentines' Dinner. Make a date with the one you love and come to Marble for a romantic dinner.

Entrepreneurs

ON THE BRINK OF CREATION: A LEADERSHIP CONVERSATION TO LAUNCH 2011

Thursday, January 20 | 6:30-8:30pm

Dr. Bill Lutz

In the world to come I shall not be asked, "Why were you not Moses?" I shall be asked, "Why were you not Zusya?"

— Rabbi Zusya

As we cross the threshold into the new potential and possibility of this year, we launch our monthly series with a truthful and inspiring conversation with Dr. Bill Lutz on ways to become you. Dr. Lutz will share his own entrepreneurial story of being at the crossroads and successfully managing to reinvent himself. Predictions from cutting edge business leaders for 2011 will also be included in the discussion. This program is co-hosted by the Marble Men's Ministry.

\$10, suggested donation (includes light refreshments).

GIFTS: A Lesbian, Gay, Bisexual & Transgender Fellowship

BRUNCH

Sunday, January 23 | 12:15pm

Following worship, we will gather for brunch in Burrell Hall, where tables will be reserved for our use. Then at 1:30pm, we attend the Spiritual Growth Hour in Bay Hall, "From Victim to Victory: Healing and Hope while Living with HIV/AIDS." See page 3 for details about this special panel discussion. Brunch, \$12. Please reserve in advance; contact Sammy Shecter (ext. 477 or SShecter@marblechurch.org).

ICE SKATING

Saturday, January 15

Pull out those scarves, mittens, and warm clothes for an ice skating outing with Marble Connection (20s-30s) and GIFTS. Keep an eye on GIFTS's page of the Marble website (www.marblechurch.org) or check our weekly email for details.

To be added to GIFTS email distribution list, contact Sammy Shecter (ext. 477 or SShecter@marblechurch.org).



Dr. Bill Lutz

Marble Connection

YOUNG ADULTS IN THEIR 20s & 30s

YOUNG ADULT BIBLE STUDY

Wednesdays, January 5, 12, 19, & 26

7:15-8:15pm

For January, as an extension of Dr. Brown's Wednesday sermon series Connection will moderate discussions following worship on "Difficult Dogmas," such as *Do You Believe in Satan?* Meets in Bay Hall. Open to all.

ICE SKATING

Saturday, January 15

Pull out those scarves, mittens, and warm clothes for an ice skating outing with Connection and GIFTS: An LGBT Fellowship. Keep an eye on Connection's page of the Marble website (www.marblechurch.org), check our weekly Connection email, or join [Connection's Facebook group](#) for details.

To be added to Connection's weekly email distribution list, contact Sammy Shecter (ext. 477 or SShecter@marblechurch.org).

40s & 50s Ministry

G.O.D. IN THE NEW YEAR DINNER

Thursday, January 27 | 5:30-7:30pm

Resolve to join us as we contemplate G.O.D. – Goals, Order, and Divine inspiration for the New Year. Appetizers begin at 5:30pm, dinner at 6:00pm. Dinner, \$12. Reservations requested by January 25. Register online at www.marblechurch.org, or contact Colleen Cosgrove (ext. 453 or CCosgrove@marblechurch.org).

STAY AND PRAY

Sunday, January 30 | 12:30-1:15pm

Spend time with others in our fellowship as we celebrate a simple prayer service. Bring your New Year's hopes and wishes, as well as your cares, concerns, and prayer requests.

Men's Ministry

ON THE BRINK OF CREATION

Thursday, January 20 | 6:30-8:30pm

Dr. Bill Lutz

All men are invited to join this truthful and inspiring conversation with Dr. Bill Lutz on ways to become you. Dr. Lutz will share his own entrepreneurial story of being at the crossroads and successfully managing to reinvent himself. Predictions from cutting edge business leaders for 2011 will also be included in the discussion. This program is co-hosted by Marble's Entrepreneurs. \$10, suggested donation (includes light refreshments).

BRUNCH & DISCUSSION

Sunday, January 23 | 12:15pm

Following worship one Sunday each month, we gather for brunch in Burrell Hall, where tables are reserved for our use on the stage area. At 1:00pm, we convene in a separate room to discuss relevant topics and consult the Scriptures and other writings for direction and encouragement. We focus this year on the writings of Dr. Norman Vincent Peale, former Senior Minister of Marble and author of *The Power of Positive Thinking*. January's topic is "How to Be Really Happy." All men invited. Brunch, \$12; no reservation necessary.

SAVE THE DATE

ANNUAL RETREAT

Friday, April 1– Sunday, April 3

Rev. Doug Wysockey-Johnson returns to lead our retreat in upstate NY.

60+ Fellowship

LUNCH AND PROGRAM

12PM, LUNCH

Served promptly at noon. January 5, Pasta lunch, \$7. Regular meal (salad, soup & dessert), \$6. Special occasion meal (scheduled throughout the season): \$10, Fellowship members; \$12, guests.

1PM, PROGRAM

January 5 – Drew Kindred kicks off the New Year with refreshing chair yoga and group dances.

January 12 – Aronda Way takes us down memory lane singing beautiful jazz standards.

January 19 – Lights! Cameras! Music! Marble member David Sisco will perform some of the greatest movie theme songs of all time, including music from *Dr. Zhivago*, *The Wizard of Oz* and much more.

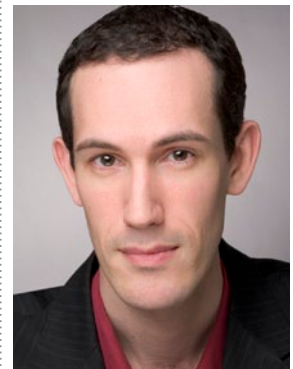
January 26 – Brian Hampton, our new Arts Ministry Director, leads an artistic presentation.

CLASSES, CLUBS & MOVIES

Classes and activities listed below are free, but registered membership in the 60+ Fellowship is required. Contact Colleen Cosgrove (212-686-2770) for information on how to join.

Exercise Class, 10:30-11:30am – Led by peer instructors certified by NYC's Dept. of the Aging. No pre-registration needed. Ellie Minor teaches line dancing January 5.

Bridge Club, 2:15pm – Experienced players welcome. On January 12, bridge master Mike Galatola teaches a class for intermediate players and above. \$2, requested donation for Mr. Galatola's instruction.



David Sisco

STAFF FOR THIS ISSUE:

EDITOR:
Karla Fritsch

PHOTOS:
Dave Cross
Karla Fritsch

GRAPHIC DESIGN:
Beth Player-DiCicco

60+ Fellowship continued

Movie of the Week, 2:15pm – Room 601.

1/5 – “Swing Time” (1936);
Fred Astaire and Ginger Rogers.

1/12 – “Titanic” (1953);
Barbara Stanwick and Clifton Webb.

1/19 – “Babes in Arms” (1939);
Mickey Rooney and Judy Garland.

1/26 – “The Phantom of the Opera” (1920);
Lon Chaney, Sr.

WALK THE LABYRINTH

Wednesday, January 5 | 2:15-3:15pm

The labyrinth is an ancient meditative prayer tool. Jean Ando, certified labyrinth facilitator, will be on hand to offer instruction on walking the labyrinth.

Marble Women’s Ministry

SPA DAY FOR THE SOUL: OUR BODIES, OUR SOULS, OUR STORIES

Saturday, January 8 | 9am-1:30pm*

Spa Day is an annual spiritual day retreat, led by the Marble Women’s Ministry. Our souls are on sacred journeys. Our bodies are the vehicles. This Spa Day, we celebrate these gifts from God and the power of stories, Biblical and personal. Women from all chapters of life are invited to this exploration of sacred esteem, connecting

body, mind and spirit to welcome wholeness and healing. Presentations, prayer time, discussion, choice of workshops, and delicious food and fellowship will all combine for a day of insight and transformation.

Cost, \$25 per person, \$20 for seniors and students; includes materials, breakfast and snacks. Register Sundays in Bay Hall after worship, online at www.marblechurch.org, or contact Siobhan Tull (ext. 412 or STull@marblechurch.org). *Registration begins at 8:30 am.

SAVE THE DATE

ANNUAL WEEKEND RETREAT

Friday, March 4 – Sunday, March 6

Due to last minute renovations at the Seaview Dolce, we will instead be retreating at the beautiful Dolce Norwalk in Norwalk, Connecticut. Housed in a former Catholic seminary, and close to public transportation, this will be a great new venue! \$305 per person includes a single room, four meals and materials. The Dolce Norwalk is located approximately five minutes away from the South Darien Metro North train station, and shuttle service will be available. For questions or to register, contact Siobhan Tull (ext. 412 or STull@marblechurch.org).

Spiritual Enrichment and Support

Wednesday Worship @ 6:15pm

Dr. Michael Brown offers insightful preaching and Gospel Choir director Djoré Nance provides musical leadership. This mid-week service blends traditional and contemporary worship styles, taking the best of both, creating a mixture that is informal and reverent, often humorous, and always Spirit-filled. **This month we begin a series on “Difficult Dogmas,”** such as: *Do You Believe in God? Do You Believe in Satan? What About Human Suffering? What Happens When We Die? What Is “Salvation”? Is Religion Relevant? Can People of Science Believe in God?* Each week after worship, the exploration continues in conversations moderated by Marble Connection in Bay Hall. All are welcome.

The Labyrinth is available, 5–8pm, in Burrell Hall for walking meditation the first Wednesday of every month. (Please call the church to confirm in case of last minute changes).

Grief Recovery Group

Tuesdays, January 25 – March 15 | 6:30pm

A new 8-week group facilitated by grief counselor Mark Glubke begins this month for those who have lost loved ones and are struggling with their sorrow. Mark holds a Master’s degree in Pastoral Counseling and Spiritual Care from Fordham University and is a therapist at Albert Einstein College of Medicine, where he leads a grief recovery group. Participants are asked to commit to the entire schedule; pre-registration is required. To register, contact Judy Tulin (ext. 709 or JTulin@marblechurch.org).

Action Volunteers

WAYS TO HELP OTHERS

The best way to find yourself is to lose yourself in the service of others. — Mohandas Gandhi

Keep that resolution to serve. Here are some opportunities, including the annual Blood Drive on Sunday, January 23. The NY Blood Center hopes for our enthusiastic support of this vital, life-sustaining program. Below are other ways to grow and serve in January:

Sunday, January 2 – Contribute food to HONEY (Help Our Neighbors Eat Year-round) by bringing single-serving non-perishables to the Action Table on the Portico.

Sunday, January 2 – Help serve lunch to disadvantaged (and, in some cases, homeless) seniors after worship at a local church on East 31st Street. **Sunday, January 9** – Volunteers

are needed to help prepare 30 lunches, 9:30-10:30am, for our Ecclesia Ministry (an open-air worshipping congregation for the homeless in Madison Square Park). Others are needed to transport the lunches and host the service, starting at 1:30pm.

Sunday, January 23 – Marble Church's annual Blood Drive. Give the gift of life; sign up in advance for an appointment to donate blood.

Saturday, January 29 – Common Ground is looking for volunteers to serve lunch 12 Noon-3:00pm to guests at The Prince George (28th Street between Fifth & Madison).

Stop at the Action Table on the Portico after worship any Sunday to talk with a committee member about these opportunities and others, or call Elise Hanley, Director of Mission & Outreach, at the church. Experience the joy of sharing your gifts and talents with others, and stick to those resolutions.



Blood Drive

Marble Small Groups 101

Paulette Thompson-Clinton, M.Div.

Do you love coming to church, but find yourself getting lost in the crowd? Do you yearn for a deeper connection with the people you see on Sundays? Do you often leave worship wanting to discuss the message with others, but don't know where to begin? If you answered "Yes" to any of these questions, then read on!

New York City has a population of over eight million people and one can easily feel isolated and alone. Marble Church is a welcoming community, but once you enter the doors, connecting with like-minded souls seeking support on their spiritual journey is not always easy. Joining a Small Group is a powerful way to do just that.

Many of us enjoy going to a concert or play with friends, and are moved by beautiful music or heartfelt drama. There is no opportunity to interact with the actors or musicians, despite the fact that their words and melodies have touched us. Afterwards, we discuss what we have experienced with our friends. This is what Small Groups are to Sunday morning worship. Intimacy and community replace the formality of corporate worship as people share their stories and grow together in faith. According to group leader Rosalind Yu, "in a Small Group setting, we are there to support each other, to learn of other people's struggles and triumphs, and be inspired."

Small Groups have been part of the Marble culture for over thirty years. Initially, people would meet at each others' homes to discuss the Bible or spiritual topics of the day. Today, groups meet at the church as well. A group, typically comprised of eight-twelve persons including a leader, can meet anywhere from four to twenty-six weeks; six to eight weeks is ideal. For many, the strong bonds formed in groups have led to lifelong friendships.

At Marble, our goal is for every member to be actively involved in a spiritual growth opportunity in addition to worship. By joining a Small Group, you can equip yourself with the spiritual tools to put your faith in action.

Some of our most popular Small Groups include: *Companions in Christ, Hearing God's Call, You Can if You Think You Can, Unwrapping Our Gifts and, Where Do I Go from Here?* To find out about these groups and others, attend the January 30 Small Groups Showcase at 1:30pm. At this Showcase, you will connect with leaders or participants from a wide selection of Small Groups, Speed Dating style. (See page 3 for details).

In Matthew 18:20 Jesus says, "For where two or three are gathered in my name, I am there among them." In this new year, I challenge you to gather with a few traveling companions to pray, share, heal, love and be transformed. God be with you as you prepare to go deeper on your spiritual journey. For additional information, please contact Paulette at PThompsonclinton@marblechurch.org



Paulette Thompson-Clinton

THE LAST WORD...

We must be willing to get rid of the life we've planned, so as to have the life that is awaiting us.... The old skin has to be shed before the new one is to come.

— Joseph Campbell

Stewardship 2011

Like good stewards of the manifold grace of God, serve one another with whatever gift each of you has received. — 1 Peter 4:10

Thank you for your pledges and gifts, they are making a difference. We look forward to growing together in stewardship during 2011. Please consider a generous pledge that acknowledges all that God has given you.

Here is what you should know:

Stewardship Sunday and the blessing of all pledge cards is **January 23, 2011**.

Pledge cards are available in the pew racks and at the reception desk in the 29th Street lobby.

If you make monthly "Pledge Power" contributions by credit card or bank transfer, you will receive information in the mail about how to continue your support.



FIRST-CLASS MAIL
U.S. POSTAGE PAID
MAILED FROM
ZIP CODE 10001
PERMIT NO. 269

Marble Collegiate Church
One West Twenty-Ninth Street, NY, NY 10001-4596
ADDRESS SERVICE REQUESTED

JAN 2011

MARBLEUPDATE

Music at Marble

"SING MAHALIA! PREACH MARTIN!"

Sunday, January 16 | 2:00pm

Marble Community Gospel Choir



The Marble Community Gospel Choir

Mahalia Jackson is a towering figure in the history of gospel music and her singing helped to motivate Dr. Martin Luther King, Jr. and propel the Civil Rights Movement. The Marble Community Gospel Choir, directed by Djoré Nance, celebrates the music and spirit of Mahalia and Dr. King with favorites such as "Precious Lord" and "It Is Well with My Soul." This is an event that will lift your spirit and send you out singing. Preceded by

lecture at 1:30pm, Get on the Bus: Music of the Freedom Riders. Admission, \$15 at the door (\$10, students 8–18.)

DISCOVERING TRUTH BENEATH THE NOTES
GET ON THE BUS: MUSIC OF THE FREEDOM RIDERS

Sunday, January 16 | 1:30pm

Join Djoré Nance, Charles Randolph-Wright, and the Marble Community as we learn the Truth beneath the Notes. Prepare yourself for an incredible musical celebration by learning more about the movement that inspired it. This lecture is part of today's gospel concert. *Those not attending the concert are invited to view the lecture via live streaming in Poling Chapel.*