

MARBLE UPDATE

MARBLE COLLEGIATE CHURCH 1 WEST 29TH STREET, NEW YORK, NEW YORK 10001-4596 WWW.MARBLECHURCH.ORG 212-686-2770 212-685-0706 FAX

NOVEMBER 2009

SUNDAY WORSHIP

11AM

Dr. Michael Brown
preaching

Schedule for Live webcast
at www.marblechurch.org:

10am – Bible Study with
Sr. Carol Perry

11am – Worship Service

12:30pm – Talkback with
Dr. Brown

12:45pm – Replay of
Bible Study

1:30pm – Adult Education

TV – Sundays @ 10am,
MNN Time Warner Ch. 67
and RCN Ch. 85

Radio – Sundays @ 7pm,
WOR Radio/710-AM

WEDNESDAY WORSHIP

6:15PM

Details on pg 6

Fundamentals of Discipleship

When new members join Marble Collegiate Church, the question is asked during the Vows of Membership: "Will you be loyal to this church, and support it with your prayers, your presence, your gifts, and your service?"

When we say "Yes" to that question, it is more than mere ritual. It is a sacred promise that as long as we remain members of this church, there are things we should be able to expect of it (worship, education, nurture, etc.), and things it should be able to expect of us.

This year, our Stewardship Committee asks us to remember our original vow. Obviously, "gifts" are important parts of the equation to reach our 2010 goal of \$1,800,000. Marble supports a variety of ministries that have a plethora of expenses associated with them. Simply put, there is no way a church can keep its doors open without the financial support of its members. We need your gifts perhaps as much as at any time in recent history. Allocations from the Collegiate Church Corporation, Marble's parent organization, have been reduced. For us to maintain the quality of ministry to which you are accustomed (and which you deserve), we need as strong a financial commitment as you are able to make.

But discipleship is about more than money. Our membership vows also refer to "prayer." We are a community of prayer that remembers one another in God's presence. I am hopeful that every day you will set aside "Marble prayer



moments" – times when you will talk with God about our ministries, our staff, the members of our fellowship, and our future. Though I cannot explain the power of prayer, I have experienced it too many times to doubt.

The same is true regarding your "presence." We need you here. I could go on about how it will benefit your life to attend Marble. However, the opposite is also true:

Your life inexpressibly benefits others when you are here. You bring something that no one else has to offer – and something that the rest of us need.

The other word in the membership vow is "service." What do you have to offer in terms of time and talents? There are needs here and in the greater community where your talents can be immeasurably helpful. A woman said to me recently, "What I've lost in my ability to support the church with dollars, I am making up in my willingness to support it with my time." Service is a vital part of our commitment to Marble Church.

"The Lord loves a cheerful giver," says Scripture. I have observed you long enough to know that you love God, you love each other, and you love Marble. It shows in how you live and give and serve. Thank you for the faithful way I know you will respond to this year's Stewardship Initiative.

God bless you!

- MARBLE CURRICULUM FOR SPIRITUAL GROWTH
- PROGRAM MINISTRIES
- SPIRITUAL ENRICHMENT
- OPPORTUNITIES TO SERVE
- MARBLE MATTERS

Sunday Worship, 11am DR. MICHAEL B. BROWN PREACHING

NOVEMBER 1

The Valley of
The Shadow

Psalms 23 (All Saints' Day)

NOVEMBER 8

I Can't Do
Everything, But...

Mark 4:30-32

NOVEMBER 15

An Attitude of
Gratitude

Philippians 1:1-11

NOVEMBER 22

Dialogue Service

Dr. Brown, Rabbi
Peter J. Rubinstein,
Imam M. Shamsi Ali

NOVEMBER 29

Why a Baby?

John 1:1-14
Advent Begins

Special Events

ALL-CHURCH THANKSGIVING DINNER & CONCERT

Thursday, November 12

6:00pm (doors open at 5:30)

Chef Ron Svenningsen and Director of Music Kenneth Dake join forces to serve up a memorable evening of delicious food and outstanding music. Dr. Michael Brown and his wife Page join members of Marble's staff in welcoming you to a traditional Thanksgiving dinner with all the trimmings. After dinner, we retire to the Sanctuary for the second in the *Concerts à la Carte* series, "Comes Autumn Time." Childcare is available throughout the evening.

COST OPTIONS:

\$25, Dinner & Concert (registration required)

\$15, Dinner Only (\$7, children)

\$15, Recital Only (at the door)

Reservations required for dinner; register Sundays in Bay Hall after worship, contact Siobhan Tull (ext. 412) at the church (STull@marblechurch.org), or register online at www.marblechurch.org.

COMES AUTUMN TIME

Thursday, November 12, 7:30pm

A musical cornucopia celebrating harvest is the second in the Marble Music Festival's series of *Concerts à la Carte*. These intimate musical soirees hosted by Kenneth Dake feature superb soloists from the Marble Sanctuary Choir and also special guests. Artists this evening include Miriam Chaudoir (soprano), Emily Eyre (mezzo-soprano), Dillon McCartney (tenor), Jonathan Michie and Neil Netherly (baritones). The concert reflects the mood of the season with "Autumn Leaves" by Johnny Mercer, "Old American

Songs" by Aaron Copland, and classics by Mendelssohn, Barber, Weil, and more.

Plus, Kenneth Dake makes a rare concert appearance at the console of Marble's mighty Austin Organ with "Pageant of Autumn" by Leo Sowerby, a work full of dazzling fireworks.

Admission, \$15 at the door (concert only)

Enjoy a full Thanksgiving dinner before the concert – \$25, dinner & concert (advance reservation required). Registration details listed above.

TRI-FAITH SERVICE

Sunday, November 22, 11:00am

Marble Church has a long and rich history of participating in interfaith activities. Our annual worship celebration of giving thanks has become a tradition for many of us and continues this year under the leadership of Dr. Michael Brown. Highlighting the service is a conversation among spiritual leaders of three faiths: Christianity, Judaism, and Islam. Congregants from Central Synagogue and two mosques (Islamic Cultural Center of New York and Jamaica Muslim Center in Queens) have been invited to attend our service. Ask a friend to join you for this unique and memorable worship experience.

SAVE THE DATE

ADVENT CONCERT:

DAWN OF REDEEMING GRACE

Sunday, December 6, 2:30pm

Kenneth Dake conducts the Festival of Voices and Sanctuary Choirs with chamber orchestra in a spiritual and musical experience for Advent that is not to be missed. \$20, admission (children under 18, \$10 at the door). Advance tickets available Sundays after worship beginning November 15; reservations with credit card may be made online at www.marblechurch.org.



Miriam Chaudoir



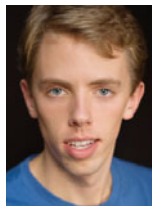
Emily Eyre



Dillon McCartney



Neil Netherly



Jonathan Michie

Marble Curriculum for Spiritual Growth



Sr. Carol Perry

Bible Study with Sister Carol Perry

SUNDAYS AT 10AM

THE BOOKS THAT DIDN'T MAKE IT

November 1, 8, 15 & 22

We have four gospels. There were others, rejected for a number of reasons. Some of these offer us surprising glimpses into early Christianity as it struggles to find its footing in a complicated era. Sr. Carol Perry highlights some of the manuscripts that were left out of our Bible but are noteworthy for their historical and literary value.

ADVENT SERIES: THE ADVENT MOSAIC

November 29, December 6 & 13

The few weeks before Christmas give us time to reflect together on the array of people and places belonging to the great story of God at work in our world. To make this Advent season truly blessed, let's take those pieces and mindfully assemble them so that we have a full panorama in which Jesus' birth in Bethlehem is the center focus.

TUESDAYS AT 6:30PM

LIVING STONES OF THE NEW TESTAMENT

November 3, 10, 17 & 24

Sr. Carol leads an exploration of major passages of Paul's letters, the four gospels, and the

Book of Revelation in an effort to understand key texts that are the core of our Christian faith. An in-depth investigation of these biblical building blocks can increase awareness of God's Spirit as we move forward in our personal growth.

WEEKDAYS, NOON-1PM

SPIRITUALITY IN THE WORKPLACE

BOOST YOUR SPIRIT OVER LUNCH

Bring your lunch and join interactive Bible study in three Manhattan locations with Sr. Carol Perry. Return to work with a new attitude.

TUESDAYS

November 3 & 17: Marble Collegiate Church, 3 West 29th Street (check lobby schedule for room).

November 10 & 24: Downtown at 2 Wall Street, Law Offices of Carter, Ledyard & Milburn, 18th floor.

THURSDAYS

November 5 & 19: St. Bartholomew's Church, 325 Park Avenue (at 51st Street). Enter through Park Avenue doors and proceed to the Welcome Center, directly behind the chancel to the right.

Adult Education in Bay Hall

ENRICHING OUR FAITH BY LIVING THE DISCIPLINES

This year, our Stewardship Committee invites us to delve, as a community, into four aspects of being part of a faith community: Presence, Prayers, Service, and Gifts. These pillars describe ways we participate at Marble, but they also are key spiritual disciplines. How do we understand the idea of God's presence and how are we called to be present to each other? How is prayer both an invitation and a mystery? What does our faith tell us about ways to serve and to give? As Marble Church asks you to offer yourself in these vital areas, Adult Education this month gives you ways to make these concepts even more evocative in your own spiritual formation.

SUNDAYS AT 1:30PM

PRESENCE: BEING THERE

November 1

Dr. Kathryn Madden

How committed are we to being present for God? What about the collective energy of physically being together in community? To develop personal identity in this fragmented society, we need to be with others. How else do we get to know the depth of who we are without an "other" who sees us and loves us unconditionally?

*Kathryn Madden Ph.D., licensed psychoanalyst and Diplomate, American Association of Pastoral Counselors, served the Blanton-Peale Institute as Academic Dean and President/CEO. She is author of *Dark Light of the Soul*, co-editor of the *Encyclopedia of Psychology & Religion*, and senior editor of *Quadrant*. She maintains a clinical practice in the city. (www.kathrynmadden.com)*

EXPLORING PRAYER

November 8

Nina H. Frost

Prayer is about so many things: listening to God and to ourselves, speaking what is on our heart, being vulnerable, being confused. As St. Augustine says of God and prayer: "Our hearts are restless until they rest in you." Come for a wide-ranging look at the mystery, solace and enduring invitation of prayer, and leave with many ways to incorporate it in your life even more.

GREAT IN SERVICE

November 15

Marble's Associate Ministers

Jesus said that if we want to be great, we will serve. Still, for many of us, service remains a complicated and confusing part of our faith. How do we find a place to serve? How do we sustain ourselves in service over the long term? What can Marble do to promote service? Dr. Kimberleigh Jordan, Rev. David Lewicki, and Rev. Steven Pierce join in conversation about the Christian call to serve others.

THE GIFTS OF OUR FAITHS

November 22

This year, for the first time, interfaith clergy participating in Marble's Trialogue Service gather for a wide-ranging class and discussion on both shared values and points of difference in the faith journey. Come and engage questions, both ancient and current, with spiritual leaders of New York City's Jewish, Muslim and Christian communities.

ADVENT SERIES: THE MYSTERY OF INCARNATION

In Advent, days shorten, and the church year urges us toward preparation, toward waiting in the dark for the coming of life in a new way. "Incarnation" is at the heart of this season: What does this word mean, both theologically and spiritually? A series of classes on this topic begins on the first Sunday in Advent.



Dr. Kathryn Madden

"AND THE WORD BECAME FLESH..."

November 29, 1:30pm

Sr. Carol Perry

The daring mystery behind Advent lies in God's decision to give us Jesus, flesh of our flesh and bone of our bone. The Incarnation becomes a gift to probe and cherish. Can Jesus' coming to live and breathe as we do give us a new appreciation of who we are in the eyes of our loving God who set it all in motion?

PRAYER CIRCLE EACH SUNDAY

Poling Chapel, 10am

This informal get-together, led by an Associate Minister of the church, centers on the day's scripture reading, singing, and prayer for individual and communal concerns.

Program Ministries**CYF Ministry**

CHILDREN, YOUTH & FAMILIES MINISTRY

Families with children 18 and under are encouraged to participate in CYF programs each Sunday, including Sunday School at 9:45am for all ages, choir, and worship.



Family Worship

FAMILY WORSHIP

Sunday, November 1, 10am

Family Worship is a creative and spiritually moving service in which the children and youth participate. You don't have to be a parent or child to benefit from this celebration of prayer and music. All are invited; meets in Bay Hall. CYF director Paulette Thompson-Clinton offers the morning's message, "Building Your House of Faith" (Matthew 22:37-39).



Nina Frost

Committed Couples**RETREAT REUNION BRUNCH**

Sunday, November 8, after worship

Whether you attended our fall weekend retreat or are simply curious about programs designed for married, engaged, or partnered couples, mark your calendar for a special brunch following worship. Retreat leader Nina Frost reflects on highlights from the retreat, and pastoral advisor Rev. Steve Pierce and program director Liz Testa share news of upcoming events. Bring your ideas for creating a nurturing and engaging space for couples of all ages with a balance of both spiritual and social activities.

Brunch, \$12. Advance registration required; RSVP to Siobhan Tull (ext. 412) at the church (STull@marblechurch.org), or register online at www.marblechurch.org.

GIFTS: A Lesbian, Gay, Bisexual & Transgender Fellowship**WORLD AIDS DAY**

Monday, November 30, 6:00pm

GIFTS and the Marble Women's Ministry

come together on the eve of World AIDS Day for a program of original music compositions, poetry readings, prayers for the healing of this global pandemic, and courage for all who live with AIDS in our time. All are invited; a reception follows. (No cost; a free-will offering will be accepted.) For inquiries, contact Elise Hanley (ext. 470) at the church (EHanley@marblechurch.org).

Marble Connection

YOUNG ADULTS IN THEIR 20s & 30s

SUNDAY CONVERSATIONS, 12:30-1:15PM, 4TH FLOOR

We meet over light brunch and talk about what matters in our lives. Get to know other young adults as we share life and faith. Rev. David Lewicki facilitates.

Discussion points in November include:

November 1 – The Pagan Roots of Christianity

November 8 – Supporting our Troops as a Christian Community

November 15 – Evolution or Intelligent Design: Exploring the Origins of the Universe

November 22 – Trialogue Sunday

November 29 – Family Love/Family Drama: Surviving the Holidays With (or Without) Our Families

SERVICE OPPORTUNITY:

Saturday, November 14 – Join Connection's team for a Habitat for Humanity build.

40s & 50s Ministry**DAY RETREAT: DISCOVERING OUR SPIRITUAL GIFTS**

Saturday, November 7, 10am–3pm

Nina H. Frost and Patrice Donnell

The Bible contains many passages about the importance of identifying and using our spiritual gifts. But what are these exactly? How do we know which are true expressions of ourselves, as well as those are trying to be born in us? This

STAFF FOR THIS ISSUE:EDITOR:
Don PiperPHOTOS:
Dave Cross
Margery WestinGRAPHIC DESIGN:
Beth Player-DiCicco

day retreat at Marble will merge practical and spiritual explorations of how to identify, encourage, and apply the unique gifts each of us brings to the world. Come for fellowship, interactive sessions, music, and prayer in a relaxed, contemplative setting.

Cost, \$25; includes lunch and materials. (\$20 option, bring your own lunch.) Register online at www.marblechurch.org or contact Siobhan Tull (ext. 412) at the church STull@marblechurch.org. For inquiries, contact Liz Testa or Colleen Cosgrove.

60+ Fellowship

LUNCH AND PROGRAM

12PM, LUNCH

Served promptly at noon. Regular meal (salad, soup & dessert), \$7. Special occasion meal (scheduled throughout the season): \$10, Fellowship members; \$12, guests.

1PM, PROGRAM

November 4 – Manhattan School of Music's talented students present a recital of seasonal music.

November 11 – Drew Kindred leads us in refreshing chair yoga and lively group dancing.

November 18 – Chef Ron's Thanksgiving Feast (\$10, Fellowship members; \$12, guests) is followed by worship in the Sanctuary, led by Dr. Bill Lutz and Kenneth Dake.

November 25 – No meeting today. Happy Thanksgiving!

CLASSES, CLUBS & MOVIES

Classes and activities listed below are free, but registered membership in the 60+ Fellowship is required. Contact Colleen Cosgrove (212-686-2770) for information on how to join.

Exercise Class, 10:30-11:30am – Led by peer instructors certified by NYC's Dept. of the Aging. No pre-registration needed. Ellie Minor teaches line dancing November 4.

BIBLE STUDY: A GATHERING OF KINGS

November 4, 11 & 18, 10:45-11:45 am

Sr. Carol Perry takes a look at the way the king found his place in Israel and the significance this had for how Jesus was viewed by his fellow countrymen.

Bridge Club, 2:15pm – Experienced players welcome. On November 11, bridge master Mike Galatola teaches a class for intermediate players and above. \$2, requested donation for Mr. Galatola's instruction.

Acting and Singing Club, 2:15pm – Fellowship members share their talents in a comfortable and informal setting.

Movie of the Week, 2:15pm – Room 601.

11/4 – "Mr. and Mrs. Bridges" (1990) with Paul Newman and Joanne Woodward.

11/11 – "Sullivan's Travels" (1942), a classic Depression-era comedy with Veronica Lake and Joel McCrea.

11/18 – "Seabiscuit" (2003) starring Jeff Bridges and Tobey McGuire.

KNITTING AND CROCHETING

Fridays through December 11, 11am-12:30pm

Mary Duffy returns to help you learn to knit or to perfect your skills. All levels welcome. Please supply your own materials. (No class November 27.) Pre-registration required.

Men's Ministry

THE POWER OF GRATITUDE

Tuesday, November 17

Brian Robinson

Men can easily overwork and overlook life's blessings, focusing more on lack than abundance. Brian Robinson offers certain strategies to help us focus on positive thinking, prayer, and ways to increase our gratitude. Brian is joined by two case managers of The Doe Fund's highly successful *Ready Willing and Able* program, who coach formerly homeless men on applying the same strategies to recreate their lives. Dinner program; see column at right.

Marble Women's Ministry

LIVING YOUR JOY

Tuesday, November 17

Bonnie St. John

In Bonnie St. John's latest book *Live Your Joy* she describes joy as "something that comes from the inside out. It feels like a flowing grace...It is love, gratitude, faith and empowerment all wrapped together." A member of Marble and a woman of faith, Bonnie shares what she has learned about finding joy, despite facing many challenges in her life. She encourages us to discover the power of personal vision, strengthen self-confidence, uncover hidden gifts, and partner with God. She shares how to become more helping, healing and accepting by making the daily choice of joy over bitterness.

Bonnie is a Paralympic ski racer who won an Olympic Medal in 1984. She is also a Rhodes Scholar, a former White House official, and an in-demand speaker and inspirational author. This program is followed by a book-signing.

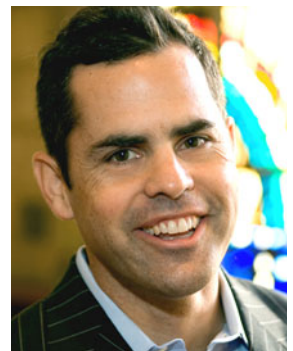
For inquiries, contact Elise Hanley (ext. 470) at the church (EHanley@marblechurch.org). Dinner program; see column at right.

DINNER PROGRAMS AT MARBLE

TIME: 6pm, dinner*
7pm, program

COST: \$18, dinner & program
\$8, program only

**24-hour advance registration required for dinner programs. Reserve in Bay Hall after Sunday worship, online at www.marblechurch.org, or call the church, 212-686-2770.*



Brian Robinson



Bonnie St. John

WORLD AIDS DAY**Monday, November 30, 6:00pm**

Marble Women's Ministry and the GIFTS Fellowship come together on the eve of World AIDS Day for a program of original music compositions, poetry readings, prayer for the healing

of this global pandemic, and courage for all who live with AIDS. All are invited; a reception follows. For inquiries, contact Elise Hanley (ext. 470) at the church (EHanley@marblechurch.org).

Spiritual Enrichment and Support

Rev. David Lewicki

Wednesday Worship @ 6:15pm

Beginning at 6:15, Gospel Choir director Djoré Nance provides musical leadership and Rev. David Lewicki offers insightful preaching. This mid-week service blends traditional and contemporary worship styles, taking the best of both, creating a mixture that is informal and reverent, often humorous and always Spirit-filled. Topics this month include:

November 4 – "A Subway Theology" (Holy Communion celebrated)

November 11 – "Anger"

November 18 – "Risk"

November 25 – "A Service of Healing Prayer"

The Labyrinth is available, 5–8pm, in Burrell Hall for walking meditation the first Wednesday of every month.

Labyrinth Retreat**A WALKING MEDITATION****Saturday, November 21, 9:30am – 2:30pm**

Do you need to get away from the pressures of your life? To seek guidance and discern God's will for you? To grieve or heal or open your heart to God's Spirit? If your answer to any of these is "yes," come to a labyrinth retreat at the church, sponsored by the Spiritual Enrichment Committee. Walking the labyrinth is a powerful tool for transformation and a metaphor for the spiritual journey – a journey to our own center and back again out into the world. Jean Ando, a Marble member and certified labyrinth facilitator, leads the retreat, which includes guided walking meditations, a brief history and overview of the labyrinth, and time for reflection and sharing.

Cost, \$20 (includes a light breakfast). Please Register Sundays in Bay Hall, online at www.marblechurch.org, or contact Judy Tulin at the church (JTulin@marblechurch.org). Childcare available on request.

Opportunities to Serve**Action Volunteers****WAYS TO HELP OTHERS**

One can never pay in gratitude; one can only pay "in kind" somewhere else.

— Anne Morrow Lindbergh

Thankful for your gifts and want to give something back? Why not volunteer during the holiday season? Last year 75 Marble members served meals to needy seniors and homeless guests throughout New York City. Listed are ways you can give love and share your thankfulness this month:

Sunday, November 1 – Contribute food to HONEY (Help Our Neighbors Eat Year-Round) by bringing single-serving non-perishables to the Action Table on the Portico.

Sunday, November 1 – Help serve lunch to disadvantaged (and, in some cases, homeless) seniors after worship at a local church.

Sunday, November 1 – After today's worship, volunteers are needed to write notes, through the Any Soldier project, to service personnel stationed overseas. Visit Poling Chapel. Note cards are provided.

Sunday, November 8 – Volunteers are needed, 9:30-10:30am, to prepare 50 lunches for our Ecclesia Ministry (an open-air worshipping congregation for the homeless in Madison Square Park). We also need others to transport the lunches and host the service starting at 1:30pm.

Sunday, November 8 – Select "Jingle Bell Wishes" (gift wishes from children living in the Latham Hotel family shelter) and purchase a present for a child. Visit Poling Chapel through November 29.

Sunday, November 8 – Select "Dear Santa" letters from SCAN (supportive services for at-risk children) and purchase a present for a child. Visit Poling Chapel through December 6.

Saturday, November 14 – Be part of Marble’s team supporting Habitat for Humanity’s Brush with Kindness build.

Tuesday, November 24 – Common Ground needs volunteers to participate in their Thanksgiving Dinner, starting at 6:00pm, serving guests at The Prince George (28th Street, btw Fifth & Madison).

Thursday, November 26 – (1) Volunteer to serve Thanksgiving dinner to the elderly of Project Find at St. Paul’s Church, 9th Avenue & 61st Street. Drivers with cars are also needed to

deliver meals to homebound clients. (2) Volunteer to serve homeless guests with the Neighborhood Coalition for Shelter on the Upper East Side. Register early for these popular events.

Stop at the Action Table on the Portico after worship any Sunday to talk with a committee member about your interests, or contact Gail Kitselman, Director of Volunteer Ministries, at the church. Get involved and make a difference.



Ecclesia volunteers in Madison Sq. Park

Marble Matters

Angels Among Us

JOHN CADUE

Last spring I had a bad bicycle accident and while in the emergency room I suffered a massive heart attack. I was close to death, frightened, and alone. Little by little, I became aware of something surrounding and lifting me up – a companion that calmed my fears. I’m not quite sure if it was God or Jesus or the Holy Spirit but I was given a glimpse, not of the afterlife or the next life, but of the continuation of life in a different form. It felt like pure energy, terrific beyond anything I could dream. Though I was eager to join this presence it was made perfectly clear that I couldn’t, so I’d best make myself comfortable where I was.

Now, it’s human nature to question something that can’t be explained logically. People have asked if my out-of-body experience wasn’t simply a reaction to the drugs and my reply is that it doesn’t really matter. Jesus told the disciples that He was with them always – I felt the truth of those words.

While I was recovering my health, the Marble community really backed me up. My phone

rang off the hook, although I hadn’t been aware many people knew what had happened. There is a spiritual grapevine here that moves quickly when someone in crisis lets it be known.

Since joining Marble three years ago I have discovered a community of “angels among us” – people who care about and serve others. Being around them encourages me to be a better person. One thing I’ve learned is that I no longer feel I’m losing any part of myself by giving up control of a situation. My experience in the emergency room last May drove that lesson home – it was the most transforming occurrence of my life and made me appreciate the time I have left on earth.

What I receive from God through this church is much more than any amount I give out, either financially or through service. It is a privilege and a blessing to support Marble. What I have isn’t mine anyway; it’s what God allows me to have. I came into this life with nothing and I’ll leave the same way. Everything in between comes from God and involves stewardship. I do what I can to leave my world a better place than I found it.



John Cadue

Gospel Choir Wins Regional Competition

The Marble Community Gospel Choir, directed by Djouré Nance, raised the roof at a regional church choir competition in Newark, NJ, winning awards for “Audience Favorite/Best Large Choir” and “Best Overall Choir.” Not only did our choir walk away with a check for \$10,000, but they are eligible for the national competition to be held in Detroit on Saturday, November 7.

“How Sweet the Sound, The Search for the Best Church Choir in America” is the only nationwide, community-focused celebration of

its kind, states organizers of the annual competition. The Marble Gospel Choir receives an all-expense paid trip to the national competition, sponsored by Verizon Wireless, where they join ten other church choirs for the grand finale. All choirs compete for the chance to win over \$25,000 and the title of “The Best Church Choir in America.” Now, that’s something to sing about.



Gospel Choir

Collegiate Churches of NY Lecture Series

DIGGING NEW NETHERLAND

Saturday, November 14, 1:30pm

Archeologists Anne-Marie Cantwell and Diana Wall, authors of *Unearthing Gotham*, talk about how archeological discoveries shed new light on the complex interactions among Europeans, Africans, and Native Americans in New Netherland. Co-sponsored by New Amsterdam History Center and the New York Society of Archeologists.

THE LAST WORD...

Take into account that great love and great achievements involve great risk.

— THE DALAI LAMA

LEISLER'S REBELLION AND THE COLLEGIATE CHURCH CHARTER

Saturday, November 21, 1:30pm

Militia captain Jacob Leisler seized control of lower New York in the late 17th century causing an uprising that reflected colonial resentment against the policies of King James II. David Voorhees, editor of *De Halve Maen* (Holland Society journal) joins Francis Sypher, Jr., translator of the Collegiate Church archives, for a discussion on the outcome of Leisler's Rebellion.

Both lectures are free and meet in Bay Hall. Inquiries to Ken Chase, (212) 799-4203, or KChase@westendchurch.org.

FIRST-CLASS MAIL
U.S. POSTAGE PAID
MAILED FROM
ZIP CODE 10001
PERMIT NO. 269

Marble Collegiate Church
One West Twenty-Ninth Street, NY, NY 10001-4596
ADDRESS SERVICE REQUESTED

NOV 2009

MARBLE UPDATE

Harvest Sunday

November 22

...I was hungry and you gave me food, I was thirsty and you gave me something to drink, I was a stranger and you welcomed me...

—Matthew 25:34-35

Celebrate the Fall Harvest, give thanks to God for all we have received, and share what we have with others who have less. Join us as we kick off a second year of the Marble Fights Hunger Food Drive. Last year, the Marble community donated over 6,000 non-perishable food items, all of which were donated to shelters and

food pantries serving hungry New Yorkers. Our goal is to double that effort this year.

During worship on Sunday, November 22 (Triologue Sunday), we will reaffirm Jesus' words in Matthew 25 and support Marble Fights Hunger by bringing non-perishable, unexpired food items to church. All are invited to participate on a regular basis throughout the year.