



MARBLE COLLEGIATE CHURCH

Where We Discover We Were Made for More

Sunday, September 12, 2021

PLEASE SILENCE ALL ELECTRONIC DEVICES

Grace Notes: Inside the Music, 10:50am

PRELUDE Solemn Prelude: In Memoriam *from For the Fallen* Edward Elgar

WELCOME AND CALL TO WORSHIP

INTROIT All My Hope on God Is Founded Herbert Howells, arr. Dake
All my hope on God is founded; God doth still my hope renew. Still through change and chance God guides me, only good and only true. God unknown, grace alone, calls my heart to be God's own. Daily doth th'almighty Giver bounteous gifts on us bestow! With delight our souls are nourished; pleasure leads us where we go. At God's hand love doth stand; joy awaits each new command. Still from earth to God eternal sacrifice of praise be done, high above all praises praising for the gift of Christ the Son. Hear God's call, one and all: those who follow shall not fall. — *Joachim Neander, paraphrased by Robert Bridges*

HYMN 365 When Morning Gilds the Skies *Laudes Domini*
Verses 1-4: All; v. 5: Choir; v. 6: All
Please refer to hymnal (in pew/online) or on-screen lyrics.

INVOCATION

BLESSING FOR THE SCHOOL YEAR

ANTHEM

PASTORAL PRAYER

THE LORD'S PRAYER (*Sung by All*) Mark Miller
Please refer to top of page 2.

HYMN In Christ Alone Stuart Townend / Keith Getty
Please refer to on-screen lyrics or music on page 3 of bulletin.

READING OF THE SCRIPTURE Matthew 7:24-29
Leader: The Word of God for the people of God.
All: Thanks be to God.

Our God, in heaven, ho-ly is your name, your
 reign come, your will done, on earth as in heaven.
 Give us to day our dai-ly bread, and help us for give, as we have been for-
 giv-en. In the time of tri-al lead us in-to light, for yours is the
 kin-dom, and the power, and the glory, for-ev-er. Our
 God, in heaven, ho-ly is your name, ho-ly is your name,

SERMON *Life: Under Construction*
BUILDING A FOUNDATION Dr. Michael Bos
Part 1 of Sermon Series

HYMN *My Hope Is Built on Nothing Less* *Solid Rock*
Please refer to on-screen lyrics or music on back page of bulletin.

ANNOUNCEMENTS AND CALL FOR OFFERING
Please click "Make a Donation" on bottom of any page at MarbleChurch.org or use Donate QR Code on the card in the pews, to take you to a secure website, Realm, to give. Donation boxes also placed around the Sanctuary. You may also mail a check; keep in mind processing takes longer. We are grateful for your faithful support.

ANTHEM Behold Now, Praise the Lord. Everett Titcomb
 Behold now, praise the Lord: all ye servants of the Lord; ye that by night stand in the house of the Lord: even in the courts of the house of our God. Lift up your hands in the sanctuary and praise the Lord. – *Psalms 134:1-2*

DOXOLOGY *Lasst uns erfreuen (The tune is that of Hymn 4.)*
Praise God from whom all blessings flow,
Praise God, all creatures here below: Alleluia! Alleluia!
Praise God with saints in heav'n above,
Praise Jesus Christ who shows God's love,
Praise the Spirit, Holy Spirit! Alleluia! Alleluia! Alleluia!

BENEDICTION AND CHORAL RESPONSE

POSTLUDE *March from Prelude to Richard III* William Walton

PARTICIPATING IN THE SERVICE
 Rev. J. Elise Brown, Ph.D., Rev. Brittany Juliette Hanlin, Gloria Cheng, *lay reader*
 The Marble Choir, Kenneth V. Dake, *director of music*

TODAY WE MARK THE 20TH ANNIVERSARY OF 9/11
 We hold in our hearts all those who lost their lives and we continue to pray for their families and all affected by that tragic day.

WORSHIP NEXT WEEK

If you can't join us live, view archives at MarbleChurch.org/Watch



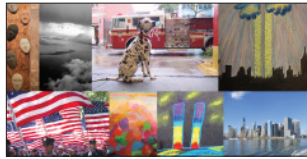
Sunday Worship, September 19 – 11:00am

Life: Under Construction

Dealing with Life's Detours – Dr. Michael Bos

Part 2 of Series

Registration for in-person Worship required; opens each Monday 9:00am. Whether one is vaccinated or not, usage of masks and social distancing required. For more details including updated safety protocols, visit MarbleChurch.org.



SACRED REMEMBRANCE – A 9/11 TRIBUTE

Virtual Art Exhibit through September

Visual artists present artwork marking the 20th anniversary of the 9/11 tragedy. View at MarbleChurch.org/engage/arts-ministry.



IN CHRIST ALONE

Text: Stuart Townend; Music: Keith Getty



1. In Christ-a-lone my hope is found; He is my light, my strength, my
2. In Christ-a-lone!- who took on flesh, full-ness of God in help - less
3. No guilt in life, no fear in death, this is the pow'r of Christ in



song. This Cor - ner stone, this sol - id Ground, firm through the
babe. This gift of love was cru - ci - fied, scorned by the
me; From life's first cry to fi - nal breath, Je - sus com -



fierc - est drought and storm. What heights of love, what depths of
ones He came to save. But now He stands in vic - to -
-mands my des - ti - ny. No power of hell, no scheme of



peace, when fears are stilled, when striv-ings cease! My Com - fort -
-ry; Sin's curse has lost its grip on me, For I am
man, can ev - er pluck me from His hand: Till He re -



-er, my All in All, here in the love of Christ I stand.
His and He is mine. Here in the death of Christ I live.
-turns or calls me home, here in the pow'r of Christ I'll stand.

Copyright © 2001 Thankyou Music. Used by permission.
CCLI Song #3350395. CCLI License #1060316.

Life at Marble

Visit MarbleChurch.org for more events, details, and most up-to-date information.

BEFORE WORSHIP



Prayer Circle – 10:00am, Zoom. Weekly time of prayer and music. All you need is a willing heart, an internet connection or telephone. *Every week.*

Sunday Morning Bible Study: Caring for Creation – 10:00am, Marble Loft. Limited-capacity, in-person, or stream at MarbleChurch.org. *Please see page 5.*

CYF CORNER – CHILDREN, YOUTH & FAMILIES MINISTRY



Sunday School & Youth Group – Pre-K through 12th Grade. *Please note, no infant or toddler childcare this fall.*

For details, please contact Brian Hampton, BHampton@MarbleChurch.org or Rev. Brittany, BFHanlin@MarbleChurch.org.



Become a Member!

Whoever you are, wherever you are in your faith journey, wherever you live – take that step and journey forward with us! For more information, please contact Kim Sebastian-Ryan, KRyan@MarbleChurch.org.

Baptism

If you're interested in exploring Baptism for yourself or your children, please contact Rev. Brittany Hanlin, BFHanlin@MarbleChurch.org. Currently, Baptisms scheduled during Sunday Worship on **September 19** and **October 17**.

UPCOMING



Bereavement Group / Every Monday, 11:00am-12:00pm – For those mourning the loss of a loved one. Led by Dr. Bill Lutz, via Zoom. Contact Judy Tulin.

Afternoon Prayer / Tuesdays, 4:00-4:20pm – Wind down your day with a brief time of sharing and prayer. Via Zoom video chat or phone.

Chair Yoga / Returns Thursday, September 16, 10:00-10:45am – Center yourself physically and spiritually with this beginner-friendly time of gentle movement via Zoom.

Season of Prayer for the RCA / September 17 - October 19 – Join other congregations surrounding the upcoming General Assembly with prayer as some important decisions will be made for the denomination. Sign up at rca.org/season-of-prayer/ to join a weekly Friday Zoom call or receive a daily prayer email.

GIFTS Welcome Back Coffee Hour / Sunday, September 19, 12:00pm – Our LGBTQ Fellowship gathers in person for a casual meet & greet in the Marble Loft (274 5th Ave).

Women's Ministry Virtual Coffee Hour / Monday, September 20, 6:30pm – We kick off this year's theme, **Together We Rise: Resilience Through Faith**.

PrimeTime (55+) / Wednesday, September 22, 1:00pm – We gather on 2nd and 4th Wednesdays via Zoom. For details, contact Baleta McKenzie, BMcKenzie@MarbleChurch.org.

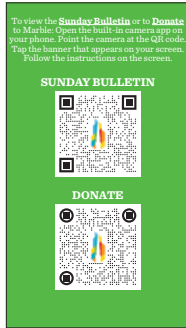
HELP OTHERS



Donate School Supplies – Leave at Marble Sundays, September 12 & 19. For those who join us online only, there are ways for you to make a positive difference in a child's life that includes volunteering to help a 2nd to 5th grader in Math and English Language Arts. Training provided. Learn more at Coffee Hour September 19.

Prayer Shawl Ministry / Monday, September 20, 5:00pm – Gather for prayer and creating together via Zoom to knit/crochet prayer shawls for the ill or homebound. Contact Judy Tulin (JTulin@MarbleChurch.org).

Spotlight



A SPECIAL WELCOME TO THOSE WORSHIPING WITH US IN THE SANCTUARY!

QR Codes Available to Donate & Access Sunday Bulletin

When you Worship in the Sanctuary, you'll find cards in the pew racks to help you contribute to the Offering (*donation boxes also available*) and to see a digital version of the bulletin.

Point and focus the camera app on your smartphone to the QR code, tap the banner that appears on your screen, then follow instructions.

We want to be good stewards of the earth God created, so although a small quantity of printed bulletins are available, we encourage you to use the digital bulletin so we can limit the amount of paper we use.

The digital Sunday bulletin can also be accessed at MarbleChurch.org. It pops up in a box directly below the streaming window on the homepage or Watch page, and as early as Friday, you can also find it on the calendar page for a particular date. Follow along during Worship or download it for easy reference during the week.



BIBLE STUDY FALL 2021

Sunday Morning Bible Study BEGINS TODAY, September 12, 10:00-10:45am

Join Rev. Anthony Livolsi and special guest presenters for a series exploring the Bible's call to be good and wise stewards of the earth. Limited-capacity, in-person attendance or stream at MarbleChurch.org. Weekly through October 17.

Tuesday Evening Bible Study Begins September 21, 6:30pm

A yearlong read-through of the Gospel of Matthew. Led by Rev. Anthony Livolsi via Zoom. Link at MarbleChurch.org.



ONLINE TEA TIME WITH KIM & SIOBHAN Thursday, September 16, 4:30-5:30pm

Pull up a comfy chair, grab your favorite mug with something delicious, and join Kim, Siobhan, and your church family online for a look back on our summer joys and a look forward with anticipation for the coming church year. Register at MarbleChurch.org by September 15.

Questions? Contact Kim Sebastian-Ryan, KRyan@MarbleChurch.org, or Siobhan Tull, STull@MarbleChurch.org.



BACK-TO-SCHOOL ONLINE COFFEE HOUR Sunday, September 19, after Worship

As we head back to church and our kids head back to school stay connected for fellowship and an opportunity to learn more about how we can give back beyond the walls of our church.



MARBLE RACIAL JUSTICE SERIES

In May 2020, not long after video footage of George Floyd's murder went viral, actions against racial injustice sprang up around the country. At Marble we recognized spiritual and moral imperatives to take up the work of anti-racism from a faith perspective in meaningful ways. The clergy hosted the first dialogue

on racial injustice following Worship in June 2020. Since then, we have continued these efforts and our series picks up again this fall. Join us as we deepen our commitments to **do** anti-racism, and to **be** a place of refuge and love for all of God's people.

Voting Rights Talk Back

Sunday, September 26, immediately after Worship in the Sanctuary

Join Dr. Michael Bos and Rev. Rashad McPherson with returning guest **Jessica Huseman**, reporter and CNN analyst, to learn more about voting rights in America and why this issue is of great importance today.

Please note: Learning to Love Through Difficult Conversations, originally scheduled for Thursday, September 16, has been postponed.



MARBLE COLLEGIATE CHURCH

1 West 29th Street
New York, NY 10001-4596
212 686 2770
MarbleChurch.org

Worship: Sundays, 11:00am

Keep the conversation going – Marble on Social Media   

For staff list and email addresses, please visit MarbleChurch.org/about/staff



MY HOPE IS BUILT

Text: Edward Mote, 1834; Tune: William B. Bradbury, 1863



1. My hope is built on noth-ing less than Je - sus Christ, my
2. When dark-ness veils his love-ly face, I rest on his un -
3. His oath, his cov - e - nant, his blood, sup - port me in the
4. When he shall come with trum-pet sound, O, may I then in



right-eous-ness; I dare not trust the sweet-est frame, but
 -chang-ing grace; In ev - ery high and storm - y gale, my
 whelm-ing flood; When all a - round my soul gives way, he
 him be found! Dressed in his right - eous - ness, a - lone, fault -



whol-ly lean on Je - sus' name. On Christ, the sol-id Rock, I stand; all
 an-chor holds with - in the veil.
 then is all my hope and stay.
 -less to stand be - fore the throne.



oth - er ground is sink-ing sand, all oth - er ground is sink-ing sand.



IF YOU NEED HELP – REACH OUT

Call the Marble Care Line, 800-531-1913, Wednesdays through Sundays, 12:00-8:00pm (available to adults 18 years and older). A trained volunteer will be there to listen.

Marble's Stephen Ministers may be able to help you with spiritual/emotional support in difficult times. Email: StephenMinistry@MarbleChurch.org

Blanton-Peale Counseling Center – 212-725-7850, blantonpeale.org

Use of photographic and recording devices is not permitted during the service. Assistive Listening System, Large print and Braille copies of bulletin available—ask an usher. The south central pews of our Sanctuary are equipped with an Induction Hearing Loop. If your hearing aid has a T-coil, please toggle to that setting to receive our audio signal directly without any headset needed.

By entering the Sanctuary, you grant to Marble Collegiate Church unrestricted right to use and publish, transmit or telecast photographs or likenesses that might be taken of you this day for use in communications related to the church.