



MARBLE COLLEGIATE CHURCH
Where We Discover We Were Made for More

Sunday, September 4, 2022

PLEASE SILENCE ALL ELECTRONIC DEVICES

PRELUDE Variations on *Engelberg (part 1)* Mark Miller
Based on the tune that serves as the opening hymn in this service.

WELCOME AND CALL TO WORSHIP

HYMN 508 When in Our Music God Is Glorified *Engelberg*
Please refer to hymnal or on-screen lyrics.

INVOCATION

SOLO Give Me Jesus..... *African American Spiritual, arr. Mark Miller*
Marie Engle, mezzo-soprano

PASTORAL PRAYER AND THE LORD'S PRAYER

Our Father, who art in heaven, hallowed be thy name, thy kingdom come, thy will be done, on earth as it is in heaven. Give us this day our daily bread. And forgive us our debts, as we forgive our debtors. And lead us not into temptation, but deliver us from evil. For thine is the kingdom, and the power, and the glory, for ever. Amen.

PRAYER RESPONSE

His Eye Is on the Sparrow Civilla Martin
Marie Engle, mezzo-soprano

HYMN God Is My Shepherd *Brother James' Air*
Please refer to page 3 of bulletin or on-screen lyrics.

READING OF THE SCRIPTURE Deuteronomy 30:11-14
Leader: The Word of God for the people of God.
All: Thanks be to God.

SERMON IT'S UP TO YOU Sister Carol Perry

SOLO We Can Be Kind David Friedman
Nathan Scott Hancock, *soloist*

ANNOUNCEMENTS AND CALL FOR OFFERING

Please click "Make a Donation" on bottom of any page at MarbleChurch.org or use Donate QR Code on card in the pews, to take you to secure website, Realm, to give. Donation boxes also placed by Sanctuary doors. You may also mail a check. We are grateful for your faithful support.

SOLO Eternal Life. Text: Attributed to St. Francis; Music: Olive Dungan
Marie Engle, *mezzo-soprano*

DOXOLOGY *Lasst uns erfreuen (The tune is that of Hymn 4.)*

**Praise God from whom all blessings flow,
Praise God, all creatures here below: Alleluia! Alleluia!
Praise God with saints in heav'n above,
Praise Jesus Christ who shows God's love,
Praise the Spirit, Holy Spirit! Alleluia! Alleluia! Alleluia!**

BENEDICTION

DUET The Lord Bless You and Keep You Text: Numbers 6:24-26
Marie Engle, Nathan Scott Hancock, *soloists* Music: John Rutter

POSTLUDE Variations on *Engelberg (conclusion)* Mark Miller

PARTICIPATING IN THE SERVICE
Dr. Michael Bos, Sister Carol Perry
Kenneth Dake, *director of music*

FLOWERS ARE PLACED IN THE SANCTUARY
In honor of and in gratitude for **Sister Carol Perry**



SISTER CAROL PERRY AT MARBLE

Today, one of our best traditions continues as Sister Carol returns IN PERSON for her Labor Day Sunday sermon.

After Worship, please join her for a Meet & Greet.

Sister Carol Perry taught Bible Study at Marble for 37 years, she was our much beloved "Nun in the Basement" (*most her classes were held in the old Meeting Place and Labyrinth Room, both in the basement*). We are blessed that even after her official retirement from Marble in May 2017, she returns to us every year for various talks, Small Groups, and preaching on Labor Day Sunday.

You can find Sister Carol's Marble Sunday Bible Studies and previous sermons in our archives at **MarbleChurch.org/Watch**.

WORSHIP NEXT WEEK

If you can't join us live, view archives at MarbleChurch.org/Watch



Sunday Worship, September 11 – 11:00am

Time to Recalibrate

Our Faith – Dr. Michael Bos

Part 1 of Sermon Series

In-Person Worship – Since New York City's "Key to NYC" COVID protocols ended, Marble updated its protocols and no longer requires proof of vaccination. **Wearing masks is still required for everyone's safety, especially since we sing when we worship.** For details including updated safety protocols, visit MarbleChurch.org.

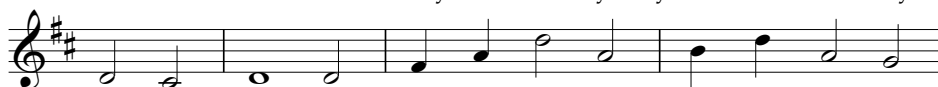
NYC Street Closings – Please plan ahead for your time at Marble. For details, visit www1.nyc.gov/events/ or call 311.

GOD IS MY SHEPHERD

Scottish Psalter, 1650, adapt. Lavon Bayler, 1992



1. God is my shep - herd, I'll not want, I feed in
2. Re - stored to life each morn - ing new, I rise up
3. When I must pass through shad - owed vale, where loss and
4. No en - e - my can o - ver - come, no power on
5. Good - ness and mer - cy all my days will sure - ly



pas - tures green; God grants me rest and bids me drink from
from the dust to fol - low God whose pres - ence gives me
death a - wait, I will not fear for God is there, my
earth de - feat the ones a - noint - ed by God's grace and
fol - low me; and where God reigns in heaven and earth, my



wa - ters calm and clean. Through dai - ly tasks, I'm
con - fi - dence and trust. I praise the name of
shep - herd strong and great, Whose rod and staff will
fed with man - na sweet. My cup is filled and
dwell - ing place will be. My shep - herd bless - es,



blessed and led by One I have not seen.
God to - day; in God I put my trust.
com - fort me and all my fears a - bate.
o - ver - flows as I my Sav - ior greet.
cares, and leads through all e - ter - ni - ty.

© 2004 Oxford University Press. All rights reserved. OneLicense.net, License #A707380.



Rev. J. Elise Brown is taking a mini-sabbatical in September and October. She returns to us November 1. Please keep Rev. Elise in your prayers during this time of renewal and refreshment for her. We look forward to her return!

Life at Marble

Visit MarbleChurch.org for more events, details, and up-to-date information.



Become a Member!

Whoever you are, wherever you are in your faith journey, wherever you live, we'd love to have you join us! Please contact Kim Sebastian-Ryan, KRyan@MarbleChurch.org, or visit MarbleChurch.org/engage/join/become-a-member.

CYF CORNER – CHILDREN, YOUTH & FAMILIES MINISTRY



Sunday School, Youth Group, Choirs & Childcare return September 11. All children and youth welcome to join us any time! registration is required. Register online or contact CYF Director Brian Hampton, BHampton@MarbleChurch.org.

Infant/Toddler childcare: 11:00am-12:15pm, Pre-K – 6th Grade Classes: 10:00am. Children's Choir: 11:15am. Youth Choir: 10:00am. 7th-12th Grade attend 11:00am Worship, followed by Youth Group until 1:00pm.



ENGAGE

Bereavement Group / Every Monday, 11:00am-12:00pm – For those mourning the loss of a loved one. Led by Dr. Bill Lutz, via Zoom. Contact Judy Tulin.

Afternoon Prayer / Every Tuesday, 4:00-4:20pm – Wind down your day with a brief time of sharing and prayer. Via Zoom video chat or phone.

Chair Yoga / Returns Thursday, September 8, 10:00-10:45am – Center yourself physically and spiritually with this time of gentle movement via Zoom.

Caregivers Support Group / Saturday, September 10, 1:00-3:00pm – Learn how to balance your life and be a Caregiver with new strength and vitality. Led by Rev. Marion Gambardella via Zoom. Contact Judy Tulin, JTulin@MarbleChurch.org.

Prayer Circle / Returns Sunday, September 11, 10:00am – Weekly time of prayer and music in the Chapel (*downstairs*) and on Zoom. The Circle is always open – all you need is a willing heart!

Grace Notes: Inside the Music / Returns Sunday, September 11, 10:50am – Kenneth Dake shares historic and theological background on the day's music.

Marble Women's Ministry Welcome Back Coffee Hour / Sunday, September 18, 12:15pm – All women invited to hear about upcoming programs and this year's theme: **Stepping Out in Faith to Action**. Meets in 3rd Floor Assembly Room (*take elevator or stairs off 29th St lobby*) or check website to join by Zoom. Newcomers encouraged to attend.

Online Tea Time with Kim & Siobhan: Summer Reflections / Wednesday, September 21, 1:00-2:00pm – Pull up a comfy chair, a beverage and join us on Zoom. Send Siobhan a photo of your travels, books you read, people you met, shows you watched, etc., to be included in a slide show, STull@MarbleChurch.org, by September 14. Register online by September 20.

PrimeTime(55+) Kick-Off Lunch / Wednesday, September 28, 12:00pm – All welcome to gather at Marble for lunch, with **Sr. Carol Perry** joining us on Zoom at 1:00pm. Also, reserve your spot now for the **Radio City Christmas Spectacular, November 30, 2:00pm** Contact Baleta McKenzie, BMcKenzie@MarbleChurch.org.

Labyrinth Walks / Return Mid-September – Feed your spirit with this walking meditation. Opportunities to walk return a few times each month. Stay tuned for details.

HELP OTHERS



Back-to-School Drive and P.S.30 Tutoring – Please see page 5.

Prayer Shawl Ministry / Monday, September 12, 5:00pm – Gather for prayer and creating together via Zoom to knit/crochet prayer shawls for the ill or homebound. Contact Judy Tulin, JTulin@MarbleChurch.org.

Become a Stephen Minister – Provide distinctively Christian caregiving to others. Training begins January 2023. Learn about listening skills, use of prayer, how to minister to someone experiencing grief, divorce, illness, loneliness, and more. Please contact Rev. Susanah Wade or apply at MarbleChurch.org/engage/stephen-ministry.

Marble Fights Hunger – We encourage you to bring canned/bottled food whenever you come to Marble. Donations benefit organizations including Icahn House. Drop-off bins in 5th Ave Narthex or 29th St Prayer Room.

Spotlight



10:00 O'CLOCK HOUR RETURNS! JEREMIAH AND ISAIAH: PROPHETS OF DOOM AND LIGHT

Sundays, September 11 & 18, 10:00-10:45am

We welcome **Rabbi Jeremy Kalmanofsky** for our first two 10:00 O'Clock Hours of the new church year. Labyrinth Room (*downstairs*) and live streamed. Jeremy has served as rabbi at Anshe Chesed, a Conservative synagogue in Manhattan, since 2001.

The works of these two prophets stand at the apex of the Hebrew Scriptures: powerful poetry and deep spiritual thought. But they come from opposite personalities. Jeremiah is mostly severe rebuke and rage, from a tortured soul. Isaiah is mostly hopeful, rejoicing in the prospect of renewal and peace. *September 11*: a date of destruction, we read passages from Jeremiah; *September 18*: we turn to Isaiah. As a Jew, Rabbi Kalmanofsky looks forward to studying these Scriptures with Christians – sacred to us both.



PRAYER CIRCLE RETURNS

Sunday, September 11, 10:00-10:45am

Join us for this weekly time of prayer and music. The Circle is always open – all you need is a willing heart. In the Chapel (*downstairs*) or on Zoom. Questions? Please contact Siobhan Tull, STull@MarbleChurch.org. *On September 25 we join the 10:00 O'Clock Hour.*



Fellowship on Fifth - Coffee Hour 2.0!

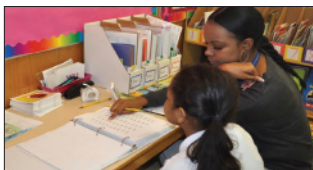
WELCOME BACK TO CHURCH & BACK TO SCHOOL!
Sunday, September 11, 12:15-1:30pm

All invited to join us in the Labyrinth Room (*downstairs*) after Worship for this opportunity to make new friends, greet old friends, learn about how you can get involved here at Marble including tutoring at P.S.30 and to drop off your donated school supplies for our Back-to-School Drive.



BACK-TO-SCHOOL DRIVE

Help children and teens from low-income families head back to school with everything they need to start the year off right. Please purchase new school supplies and leave in bins in 5th Ave Narthex or 29th St Prayer Room. For ideas, visit MarbleChurch.org/give/back-to-school-drive. Monetary donations also welcome. Make checks payable to Marble Collegiate Church, write "Back-to-School" in memo.



P.S.30 TUTORS NEEDED

Help make a difference in the lives of children by participating in Marble's Tutoring Program at P.S.30 in Harlem. Tutor 3rd – 5th Grade students in English Language Arts and Math, once a week, from October to June. Training provided. We especially need Math tutors. For more information, contact Rev. Susanah Wade, SWade@MarbleChurch.org.



VOTER OUTREACH CAMPAIGN

Sunday, September 18, 12:15pm

Join the Marble and Middle Collegiate Church Communities in mobilizing voter registration through efforts to encourage citizens around the country to vote. Claudia Slacik from Middle Collegiate shares information on the ongoing post-card campaign to write to under-represented voters, as well as provide education on important electoral issues. Labyrinth Room (*downstairs*).



MARBLE COLLEGIATE CHURCH

1 West 29th Street
New York, NY 10001-4596
212 686 2770
MarbleChurch.org

Worship: Sundays, 11:00am

Keep the conversation going – visit Marble on Social Media



For staff list and email addresses, please visit MarbleChurch.org/about/staff

AFFIRMATION OF COLLEGIATE CONSISTORY NOMINEES

The following members have been chosen to serve as Deacons of Marble Collegiate Church: **Larry Schafer, Abigail Shue, Iyana Titus**. Will you please support them with your prayers?



Gratitude Sunday

GRATITUDE SUNDAY IDEAS

Please respond by Wednesday, September 7

The Gratitude Sunday Committee prayerfully enters this season of planning with a call for your ideas. Please share your thoughts about what you enjoyed and cherished from past Gratitude Sundays, what you would change, and your guidance for the next very important pledging season – the first to meet the challenge of our new financial reality. **Please email your thoughts to Programs@MarbleChurch.org.**



IT'S SIMPLE (NOT EASY): LOVE YOUR NEIGHBOR.

It is a simple request, and yet it is so hard for us to do. In many cases, we go as far as to choose division and hate over love. One of the most egregious examples of this is the thousands of lives lost each year due to gun violence. At Marble we say enough is enough. **How will you love your neighbor?** Use the

tags on the fence to share your ideas and thoughts on how we can show love to one another and support an end to gun violence. **MarbleChurch.org/Ribbons**

IF YOU NEED HELP – PLEASE REACH OUT

Marble's Stephen Ministers may be able to help you with spiritual/emotional support in difficult times. Email: StephenMinistry@MarbleChurch.org

The Marble Prayer Ministry Team is here to pray for you. Submit requests on bottom of any page at MarbleChurch.org.

Blanton-Peale Counseling Center – 212-725-7850, blantonpeale.org

National Suicide Prevention Lifeline – 988, call or text, available 24 hours



Use of photographic and recording devices is not permitted during the service. Assistive Listening System, Large print and Braille copies of bulletin available—ask an usher. The south central pews of our Sanctuary are equipped with an Induction Hearing Loop. If your hearing aid has a T-coil, please toggle to that setting to receive our audio signal directly without any headset needed.

By entering the Sanctuary, you grant Marble Collegiate Church unrestricted right to use and publish, transmit or telecast photographs or likenesses that might be taken of you this day for use in communications related to the church.